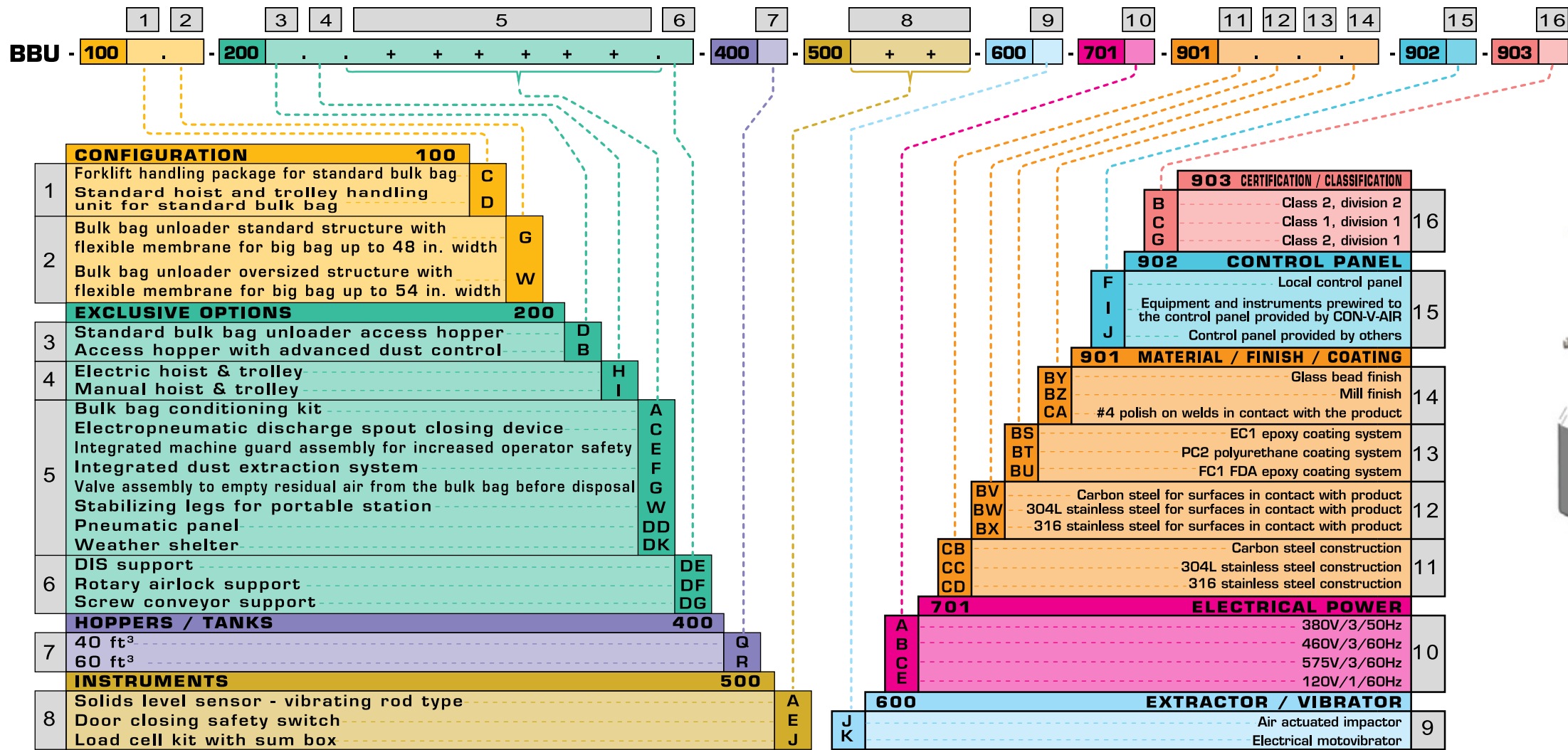
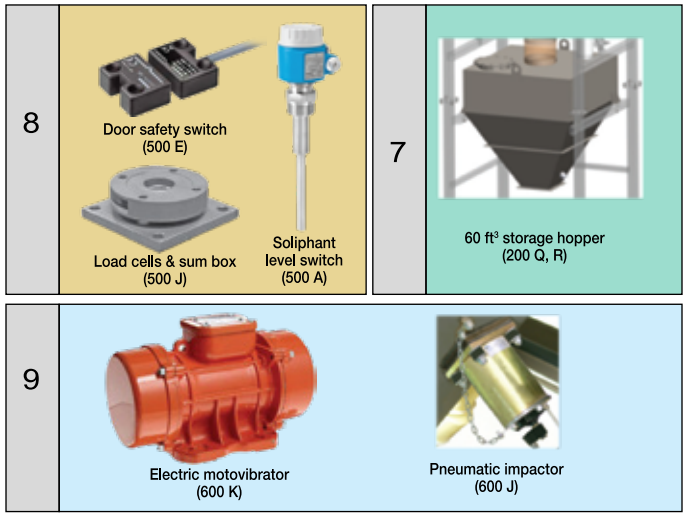
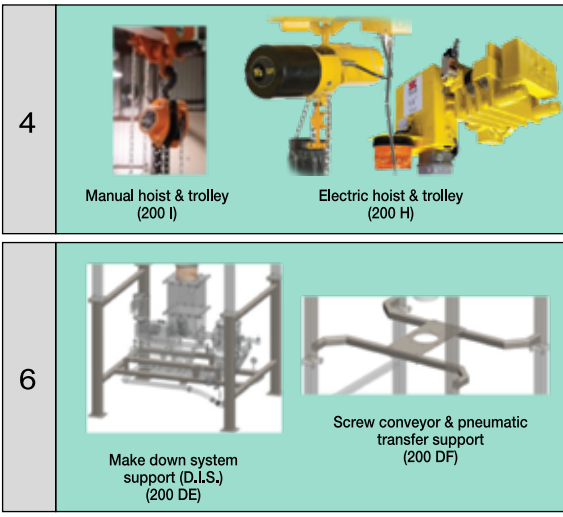
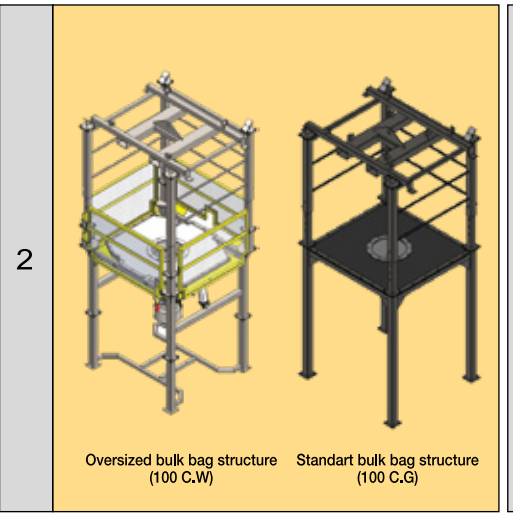
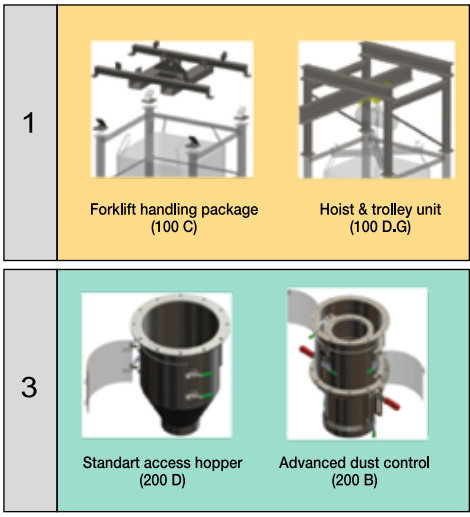
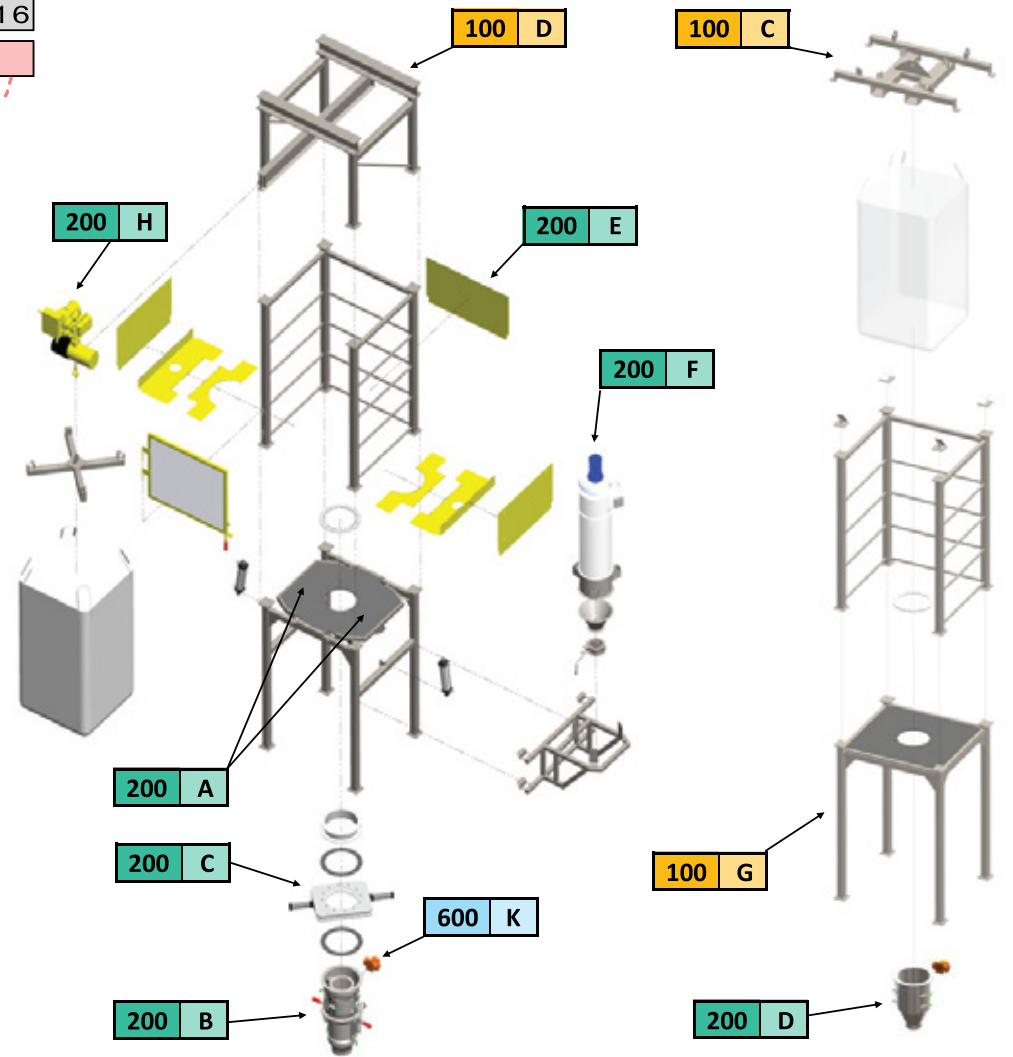


## BBU - BULK BAG UNLOADER CONFIGURATOR



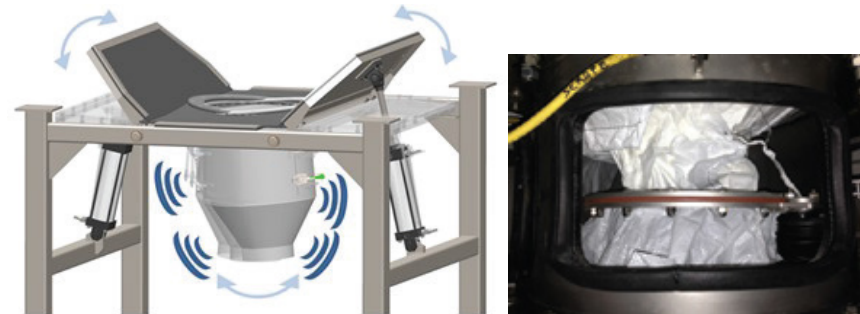
000 : Section number    Letters : Option code    + : Multiple options    . : Single option    Ø : Symbol to enter if no option selected



## BBU - BULK BAG UNLOADER CONFIGURATOR

### Vibrating access hopper

Not only the hopper allows the connection with the discharge of the flexible container and your process equipments it offers all the features that you expect to find on such a device, it is, in addition, equipped with an air or electric vibrator. The action of these vibrators allows an optimal fluidity in the critical transition zone between the storage part (upper part) and the process (lower part). This optimized fluidization ensures a continuous and constant supply to the process.



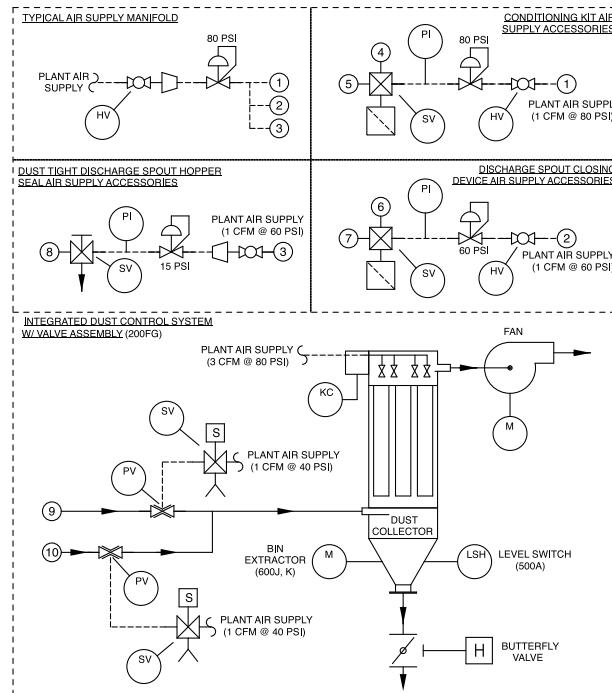
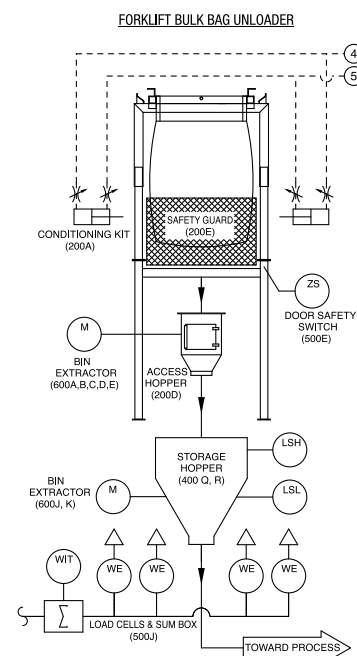
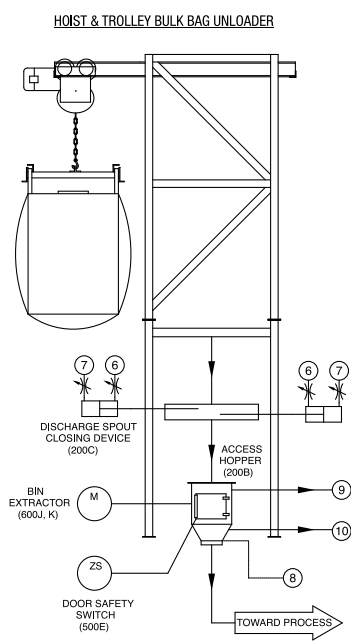
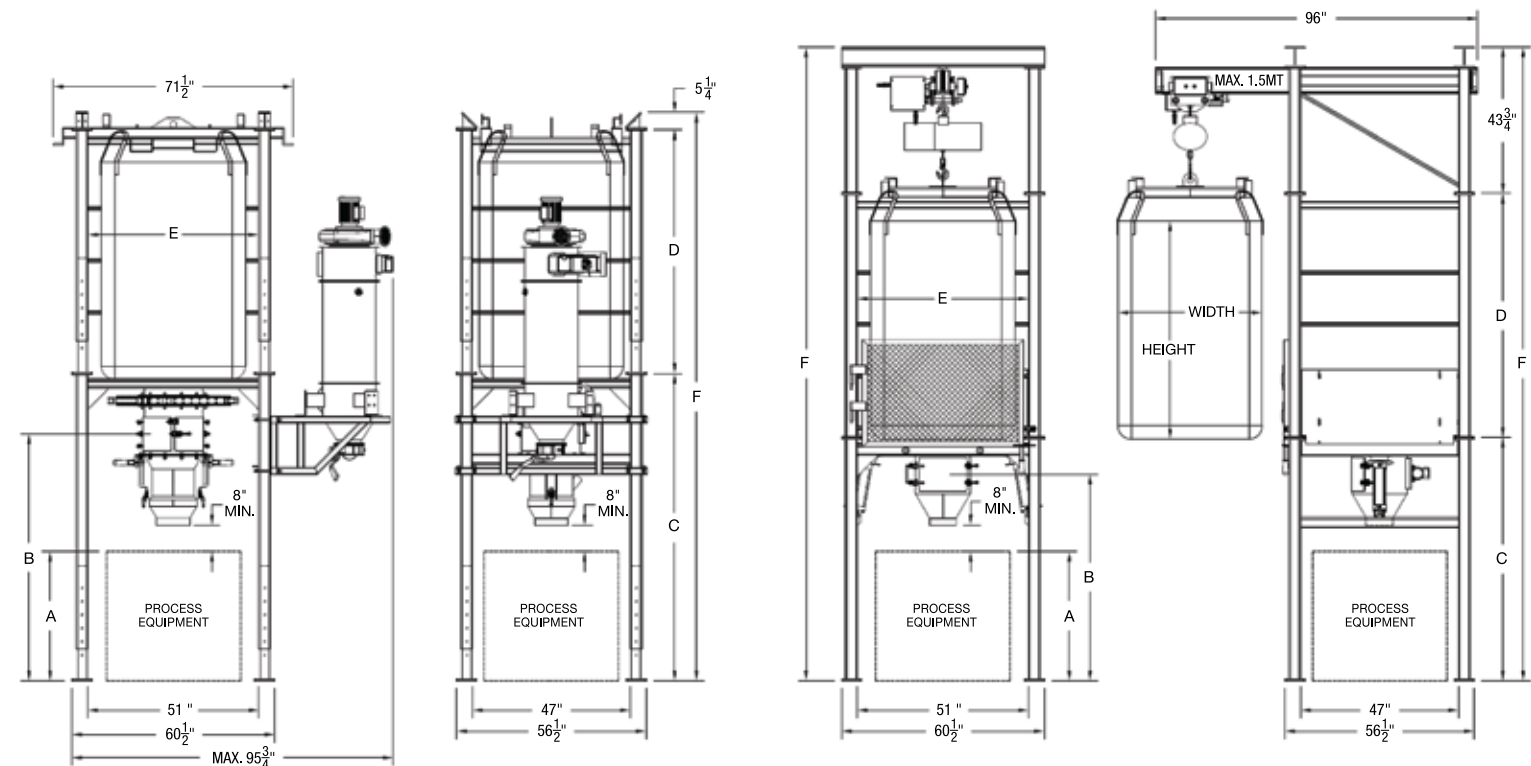
### Conditioning kit

A bag bottom massage system fluidizes the compacted materials allowing their free flow. This simple and reliable system, is designed to support and fluidize the contents of the heavier flexible containers!



### Dust extraction system

The CON-V-AIR bulk bag unloader "BBU" incorporates a dust extraction system that provides a cleaner work environment. This same suction system intervenes intensively at the end of the flexible container emptying sequence and completes the cycle. Once the bag is effectively emptied using the bag conditioning kit and vibrating hopper, the suction system removes as much of the contents of the flexible container as possible, thus ensuring optimal recovery of the solid bulk.



### BULK BAG STATION DIMENSIONS

PROCESS EQUIPMENT "A"	ACCESS HOPPER DOOR "B"		BOTTOM STRUCTURE "C"		BULK BAG STRUCTURE "D"		BULK BAG STRUCTURE INSIDE WIDTH "E"		OVERALL HEIGHT "F"		BAG DIMENSIONS		TOTAL CONSUMPTION		WEIGHT											
	in.	mm	in.	mm	in.	mm	in.	mm	in.	mm	MAX. WIDTH (in.)	MAX. HEIGHT (in.)	AIR CFM	ELECT. PSI	TOTAL HP	EACH LEG lbs										
FORK LIFT MODELS	STD. ACCESS HOPPER	ELECTRIC MOTOVIBRATOR		BBU-100C.G-200D-600A		32	813	55	1399	66	1678	73	1848	51	1295	145	3672	48	1219	65	1651	-	-	0.13	1306	327
		BAG CONDITIONING KIT ELECTRIC MOTOVIBRATOR		BBU-100C.G-200D.A+E-600A		32	813	55	1399	69	1741	73	1848	51	1295	147	3735	48	1219	65	1651	1	80	0.13	1720	430
	DUST TIGHT ACCESS HOPPER	SPOUT CLOSING DEVICE BAG CONDITIONING KIT ELECTRIC MOTOVIBRATOR		BBU-100C.G-200D.A+C+E-600A		32	813	55	1399	76	1922	73	1848	51	1295	154	3916	48	1219	65	1651	2	80	0.13	1825	456
		SPOUT CLOSING DEVICE BAG CONDITIONING KIT DUST EXTRACTION SYSTEM PNEUMATIC VIBRATOR		BBU-100C.G-200D.A+C+E+F+G-600D		32	813	55	1399	76	1922	73	1848	51	1295	154	3916	48	1219	65	1651	6	80	1.13	2450	613
		DUST EXTRACTION SYSTEM ELECTRIC MOTOVIBRATOR		BBU-100C.G-200B.F+G-600D		32	813	67	1705	78	1984	73	1848	51	1295	157	3978	48	1219	65	1651	5	80	1.13	2011	503
		BAG CONDITIONING KIT DUST EXTRACTION SYSTEM ELECTRIC MOTOVIBRATOR		BBU-100C.G-200B.A+C+E+F+G-600D		32	813	67	1705	81	2048	73	1848	51	1295	159	4042	48	1219	65	1651	6	80	1.13	2425	606
HOIST MODELS	STD. ACCESS HOPPER	ELECTRIC MOTOVIBRATOR		BBU-100D.G-200H.D-600A		32	813	55	1399	66	1678	79	2013	51	1295	189	4802	48	1219	65	1651	-	-	3.13	1641	410
		BAG CONDITIONING KIT ELECTRIC MOTOVIBRATOR		BBU-100D.G-200H.D.A+E-600A		32	813	55	1399	69	1741	79	2013	51	1295	192	4866	48	1219	65	1651	1	80	3.13	2055	514
	DUST TIGHT ACCESS HOPPER	SPOUT CLOSING DEVICE BAG CONDITIONING KIT ELECTRIC MOTOVIBRATOR		BBU-100D.G-200H.D.A+C+E-600A		32	813	55	1399	76	1922	79	2013	51	1295	199	5047	48	1219	65	1651	2	80	3.13	2160	540
		SPOUT CLOSING DEVICE BAG CONDITIONING KIT DUST EXTRACTION SYSTEM PNEUMATIC VIBRATOR		BBU-100D.G-200H.D.A+C+E+F+G-600D		32	813	55	1399	76	1922	79	2013	51	1295	199	5047	48	1219	65	1651	6	80	4.13	2785	696
		DUST EXTRACTION SYSTEM ELECTRIC MOTOVIBRATOR		BBU-100D.G-200H.B.F+G-600D		32	813	67	1705	78	1984	79	2013	51	1295	201	5109	48	1219	65	1651	5	80	4.13	2346	587
		BAG CONDITIONING KIT DUST EXTRACTION SYSTEM ELECTRIC MOTOVIBRATOR		BBU-100D.G-200H.B.A+E+F+G-600D		32	813	67	1705	81	2048	79	2013	51	1295	204	5172	48	1219	65	1651	6	80	4.13	2760	690
SPOUT CLOSING DEVICE BAG CONDITIONING KIT DUST EXTRACTION SYSTEM ELECTRIC VIBRATOR		BBU-100D.G-200H.B.A+C+E+F+G-600D		32	813	67	1705	88	2229	79	2013	51	1295	211	5353	48	1219	65	1651	7	80	4.13	2865	716		