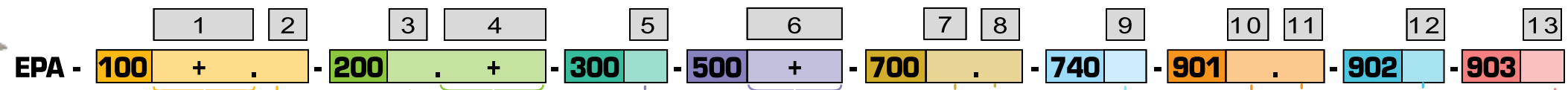
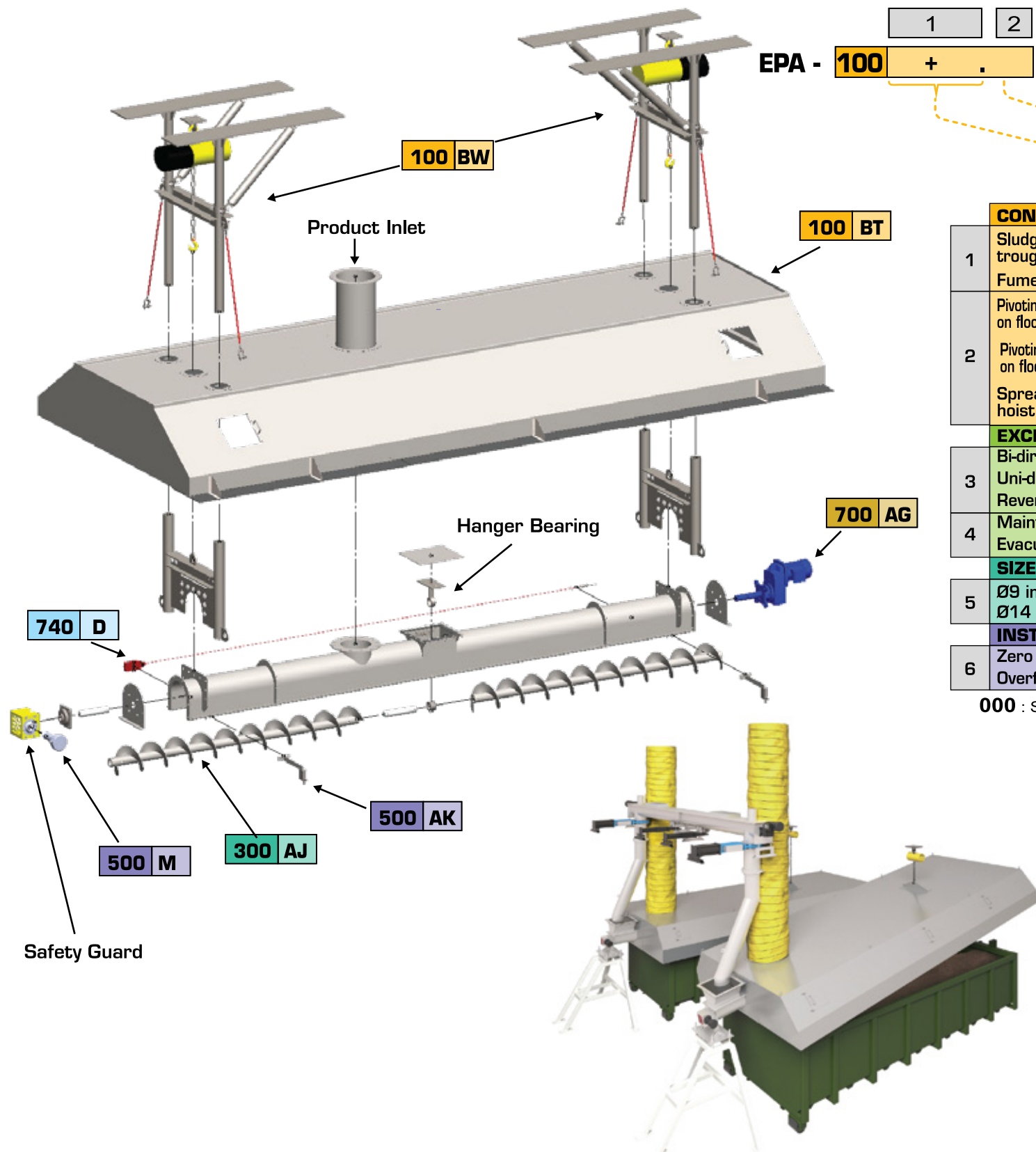


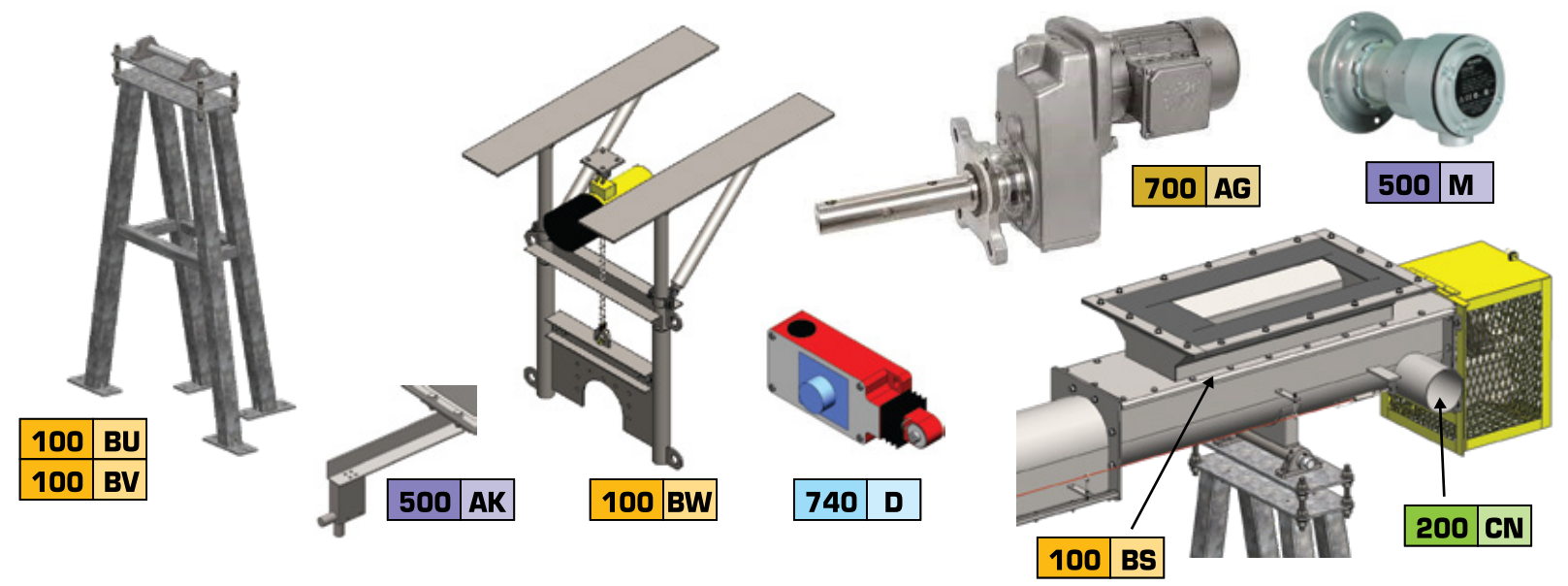
## EPA - SLUDGE SPREADER SYSTEM CONFIGURATOR



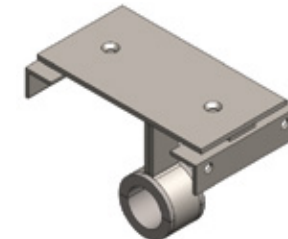
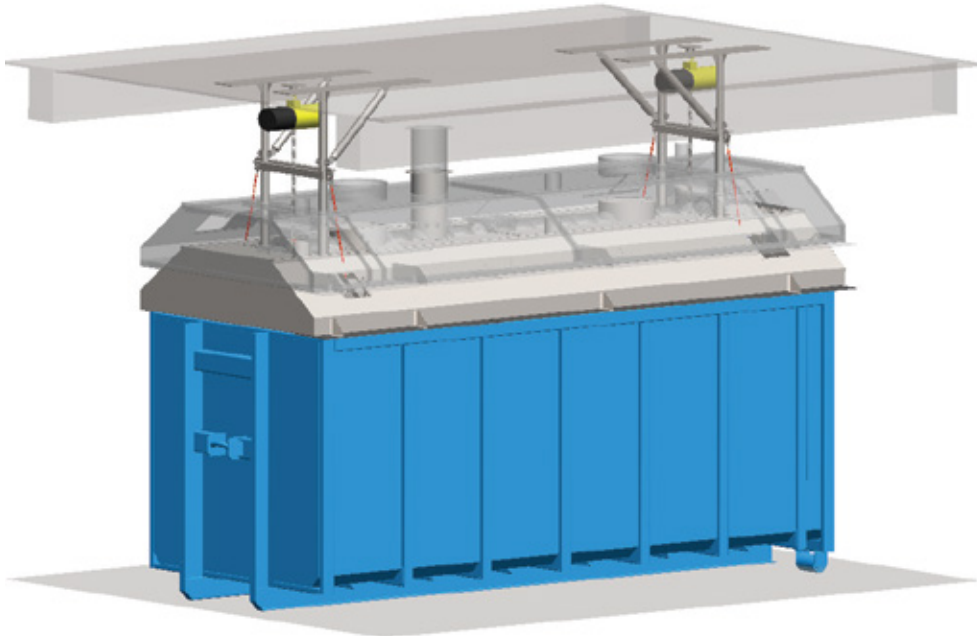
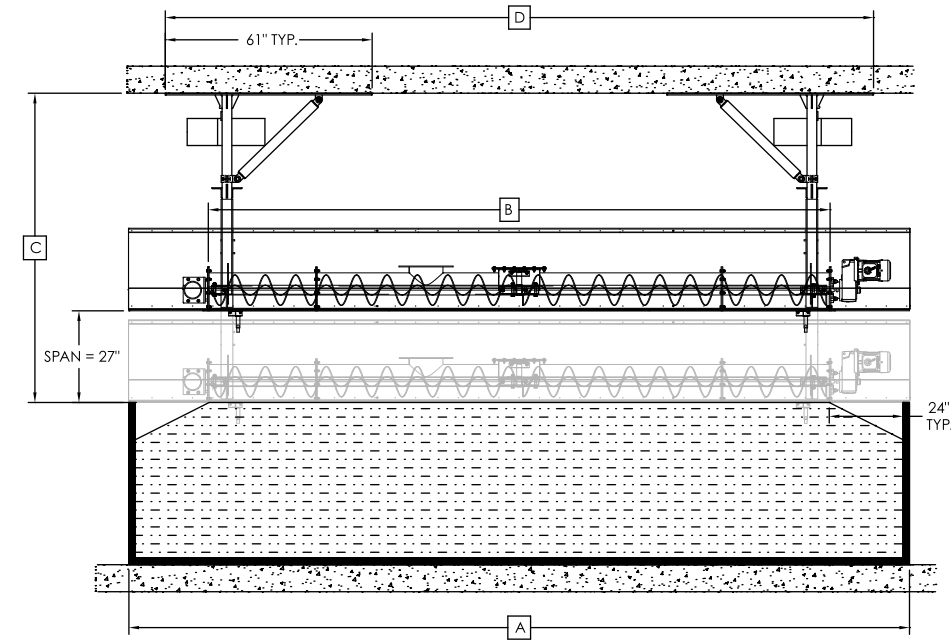
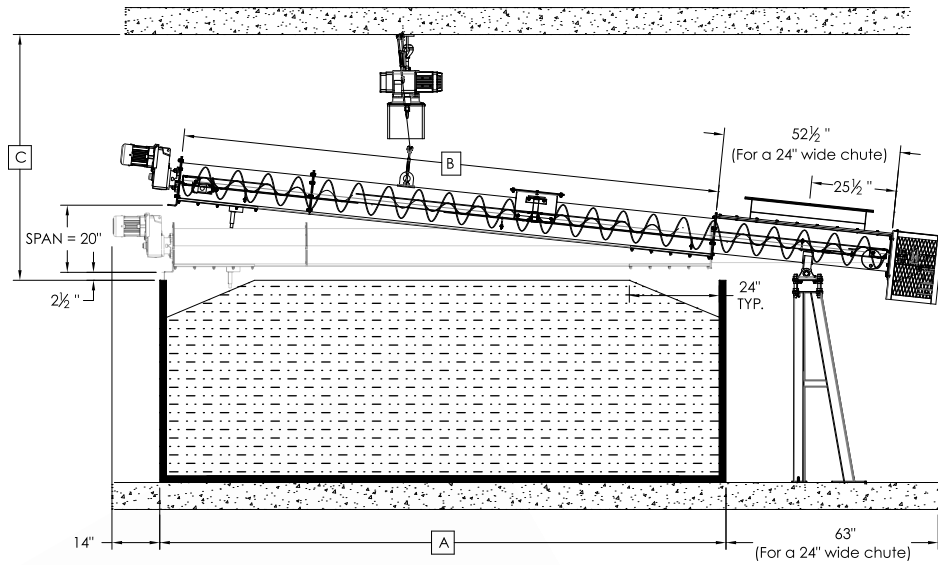
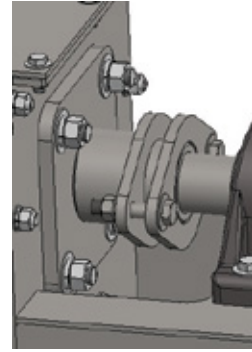
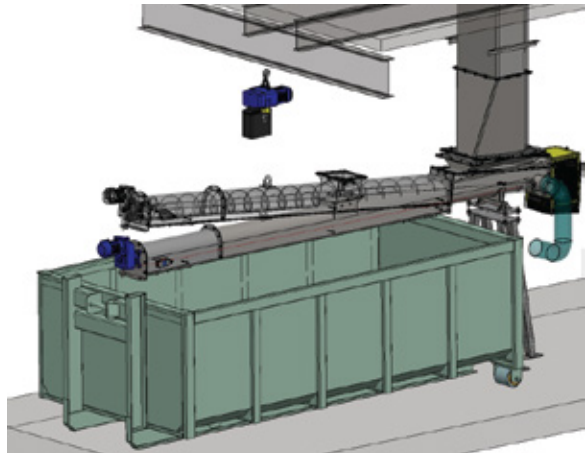
CONFIGURATION 100	
1	Sludge inlet with inverted trough and flexible membrane Fume hood
2	Pivoting spreader with stationary support on floor and ceiling mounted manual hoist Pivoting spreader with stationary support on floor and ceiling mounted electric hoist Spreader with tandem electric hoist and telescopic supports
<b>EXCLUSIVE OPTIONS 200</b>	
3	Bi-directional screw Uni-directional screw Reversible screw
4	Maintenance hatch Evacuation port for sludge that is too liquid
<b>SIZES 300</b>	
5	Ø9 in. screw Ø14 in. screw
<b>INSTRUMENTS 500</b>	
6	Zero speed switch Overflow switch for sludge dumpster

903 CERTIFICATION / CLASSIFICATION	
B	Class 2, division 2
C	Class 1, division 1
<b>902 CONTROL PANEL</b>	
F	Local control panel
I	Equipment and instruments prewired to the control panel provided by CON-V-AIR
J	Control panel provided by others
<b>901 MATERIAL / FINISH / COATING</b>	
CT	Glass bead finish
CU	Mill finish
CV	#4 polish on welds in contact with the product
CW	304L stainless steel construction
CX	316 stainless steel construction
<b>740 SAFETY DEVICE</b>	
D	Emergency pull cable
<b>700 MOTOR &amp; GEARMOTOR</b>	
AD	380V/3/50Hz
AE	460V/3/60Hz
AF	575V/3/60Hz
AG	1 HP CEMA gearmotor
AH	1.5 HP CEMA gearmotor
AI	2 HP CEMA gearmotor
AJ	3 HP CEMA gearmotor

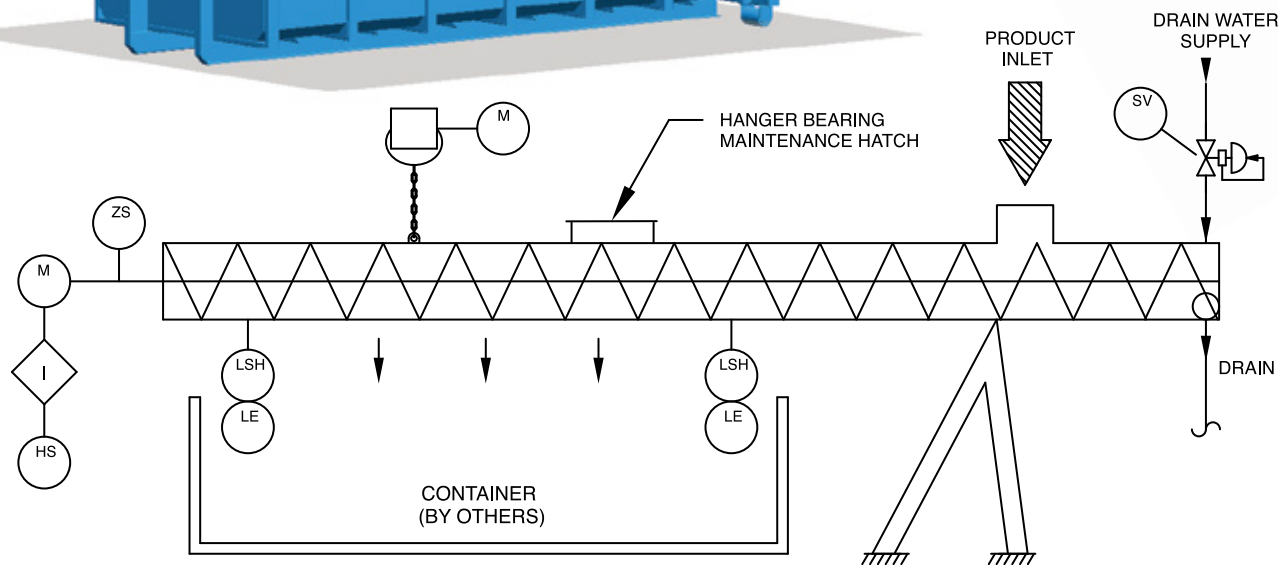
000 : Section number    Letters : Option code    + : Multiple options    . : Single option    Ø : Symbol to enter if no option selected



## EPA - SLUDGE SPREADER SYSTEM OPTIONS



SLUDGE SPREADER MAXIMUM CAPACITIES		
Screw Ø (in.)	Feed Rate (ft <sup>3</sup> /hr)	Screw Speed (RPM)
9	300	55
14	1040	50



ADDITIONAL OPTIONS	CONFIGURATION #	DIMENSIONS (For Ø9" sludge spreader) *								TOTAL CONSUMPTIONS		WEIGHT	
		CONTAINER LENGTH "A"		SPREADING LENGTH "B"		MIN. CLEARANCE "C"		CEILING SUPPORT SPAN "D"		MAX. WATER CONSUMPTION	ELECT.	TOTAL	
		in.	mm	in.	mm	in.	mm	in.	mm	GPM	PSI	HP	lbs
MODEL EPA-P (PIVOT)	- W/O FUME HOOD	EPA-100BS.BV		A - 10	A - 254	72	1829	-	-	-	-	1	960
	- W/ FUME HOOD	EPA-100BS+BT.BV		A - 10	A - 254	86	2184	-	-	-	-	1	1830
	- W/O FUME HOOD - EVACUATION PORT	EPA-100BS.BV-200CN		A - 10	A - 254	72	1829	-	-	17	60	1	960
	- W/ FUME HOOD - EVACUATION PORT	EPA-100BS+BT.BV-200CN		A - 10	A - 254	86	2184	-	-	17	60	1	1830
MODEL EPA-T (TANDEM)	- W/O FUME HOOD	EPA-100BW		A - 47	A - 1194	78.25	1988	B + 25.5	B + 648	-	-	2	1185
	- W/ FUME HOOD	EPA-100BT.BW		A - 47	A - 1194	91.5	2324	B + 25.5	B + 648	-	-	2	2055
	- W/O FUME HOOD - EVACUATION PORT	EPA-100BW-200CN		A - 47	A - 1194	78.3	1988	B + 25.5	B + 648	17	60	2	1185
	- W/ FUME HOOD - EVACUATION PORT	EPA-100BT.BW-200CN		A - 47	A - 1194	91.5	2324	B + 25.5	B + 648	17	60	2	2055