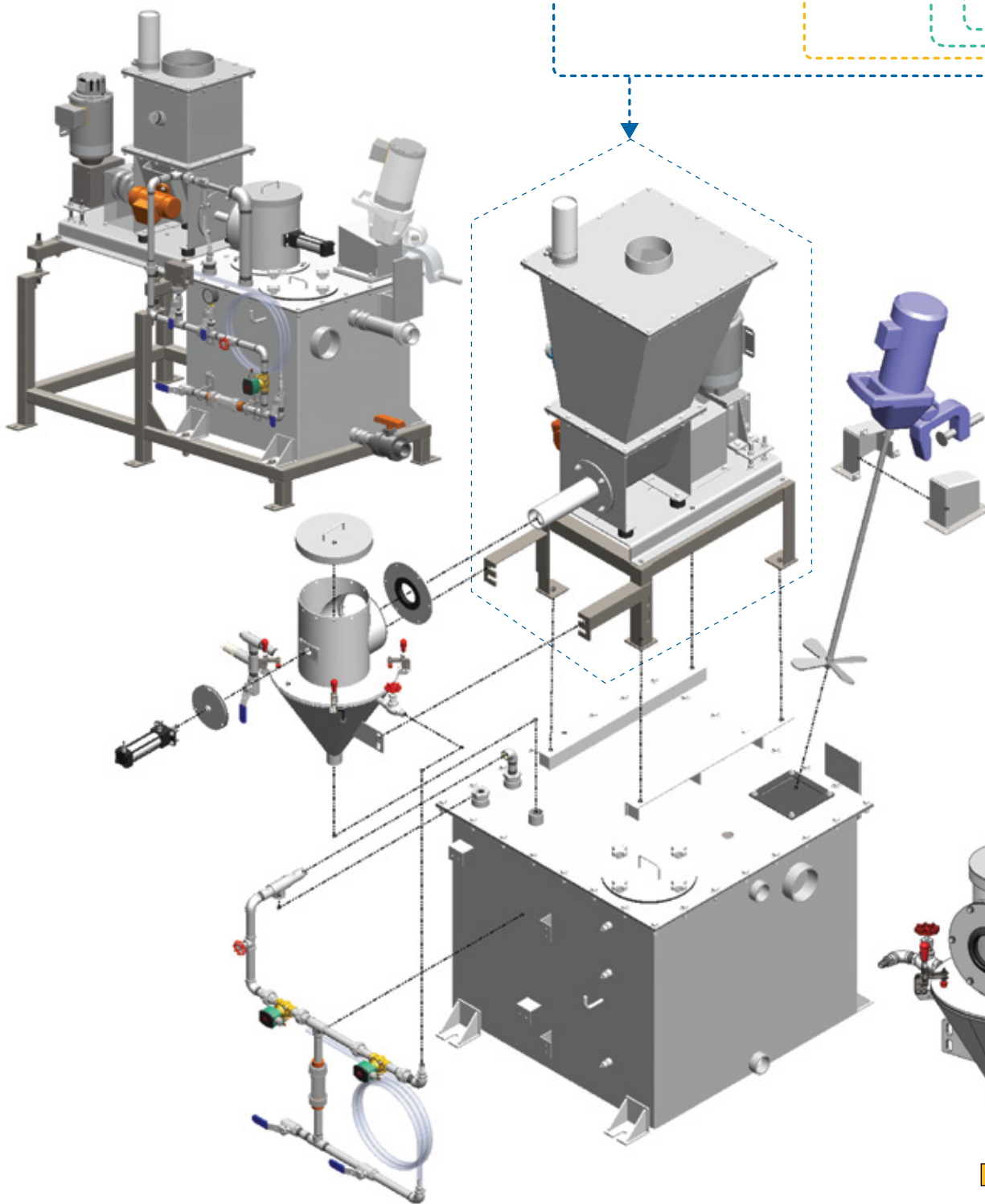
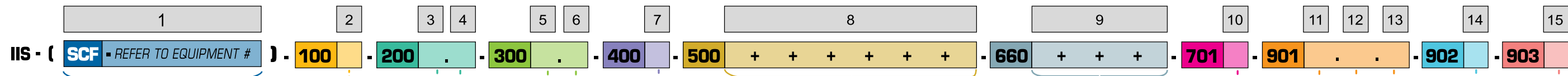


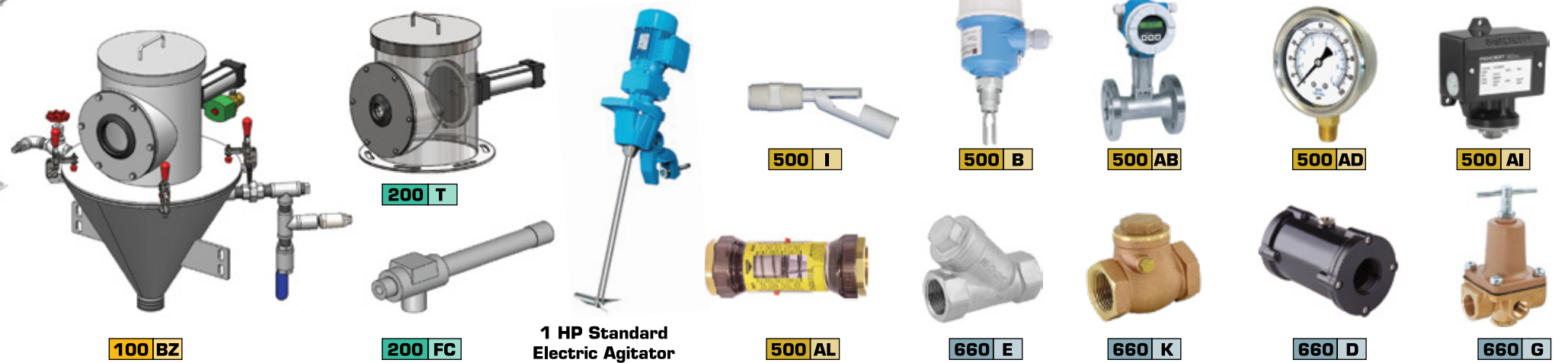
IIS - VARIABLE CONCENTRATION INDIRECT INJECTION SYSTEM CONFIGURATOR



RELATED EQUIPMENT	
1	Screw feeder (Refer to equipment's #) SCF
CONFIGURATION 100	
2	Without wetting unit BY With wetting unit BZ
EXCLUSIVE OPTIONS 200	
3	Screw feeder pneumatic spout closing device T Screw feeder hydraulic spout closing device FA
4	Dust and vapour device FC
SIZES 300	
Service water inlet	
5	3/4 in. D 1 in. E
Discharge	
6	2 in. G 2 1/2 in. H 3 in. I 4 in. K
HOPPERS / TANKS 400	
7	200 L K 600 L S
INSTRUMENTS 500	
8	Liquids level sensor - tuning fork type B Float switch I Flowmeter transmitter AB Rotameter AL Pressure gauge AD Pressure switch AI

903 CERTIFICATION/CLASSIFICATION	
B	Class 2, division 2
G	Class 2, division 1
C	Class 1, division 1
902 CONTROL PANEL	
H	Junction box
I	Equipment and instruments prewired to the control panel provided by CON-V-AIR
J	Control panel provided by others
901 MATERIAL/FINISH/COATING	
BQ	Glass bead finished - exterior only
DE	#4 polish on welds in contact with the product
G	EC3 epoxy coating system (Potable water)
O	Carbon steel for surfaces in contact with product
DH	304 L stainless steel for surfaces in contact with product
BR	316 L stainless steel for surfaces in contact with product
701 ELECTRICAL POWER	
A	380V/3/50Hz
B	460V/3/60Hz
C	575V/3/60Hz
660 PROCESS ACCESSORIES	
D	Pneumatic pinch valve
E	"Y" strainer
G	Manual pressure regulator
K	Check valve

000 : Section number **Letters** : Option code **+** : Multiple options **.** : Single option **Ø** : Symbol to enter if no option selected

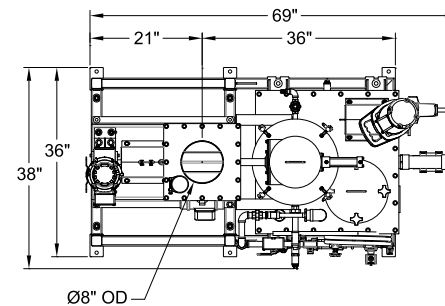
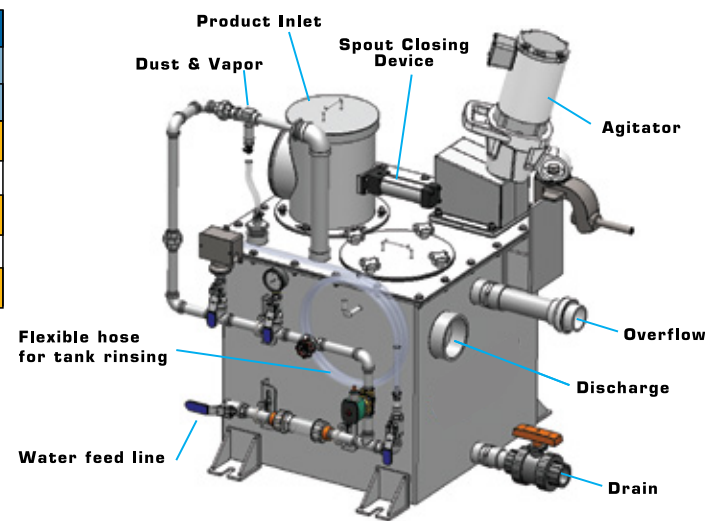


IIS - VARIABLE CONCENTRATION INDIRECT INJECTION SYSTEM CONFIGURATOR

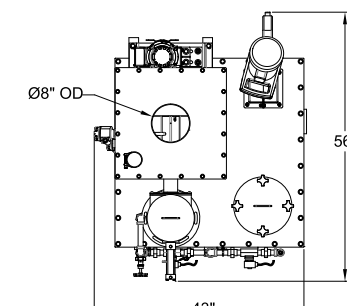
Indirect Injection Capacities Table									
Model	Water Feed Line (in.)	Discharge Feed Line (in.)	Max. Dry Chemical Feed Rate		Water Consumption		Water Inlet Pressure (PSIG)	Air Consumption (CFM) *	Electrical Consumption (HP) *
			Kg/min **	Kg/hr **	GPM	L/min.			
IIS-200	3/4	3	4	240	26.5	100	60	2	2
IIS-600	3/4	4	12	720	53	200	60	2	2

* : Includes the screw feeder maximum consumptions
 ** : For 25 lbs/ft³ Density

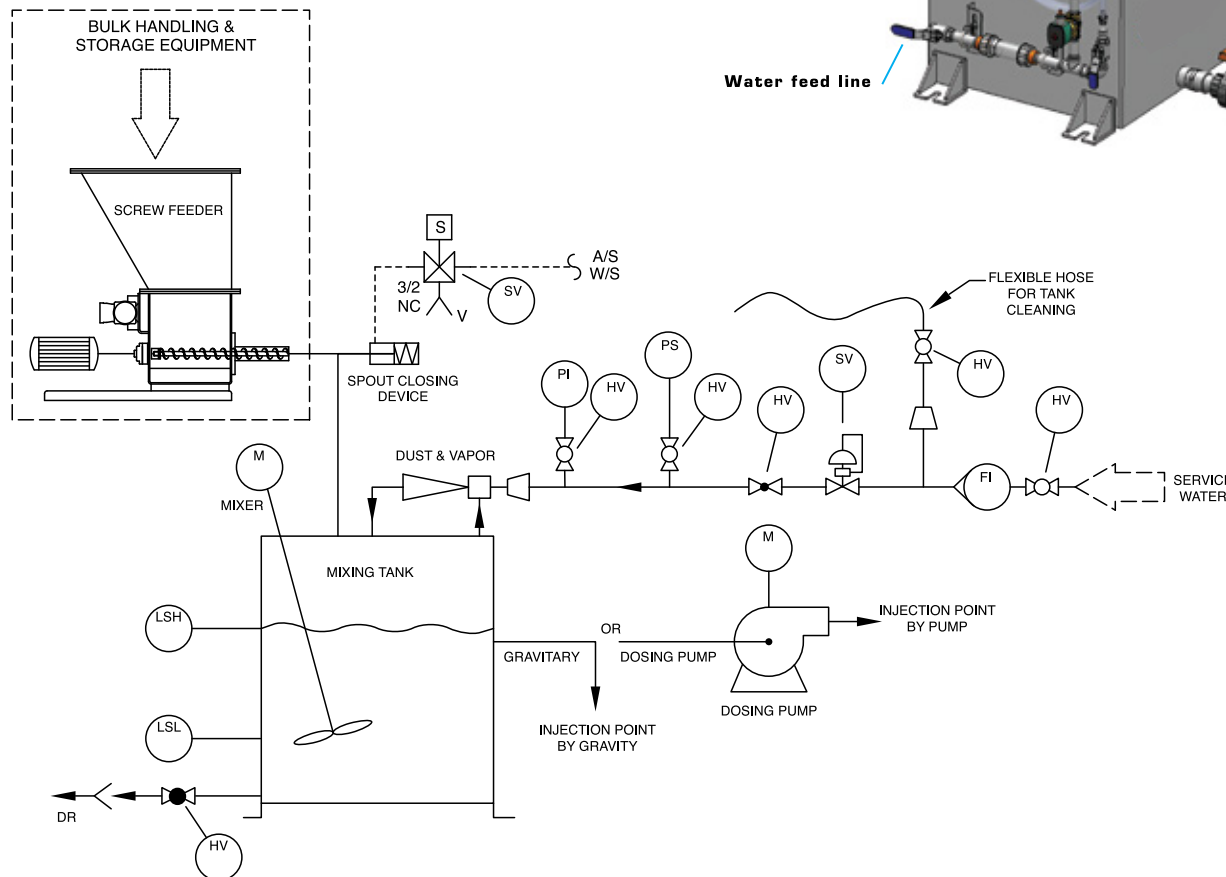
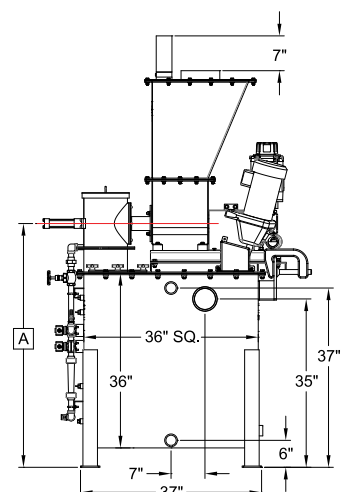
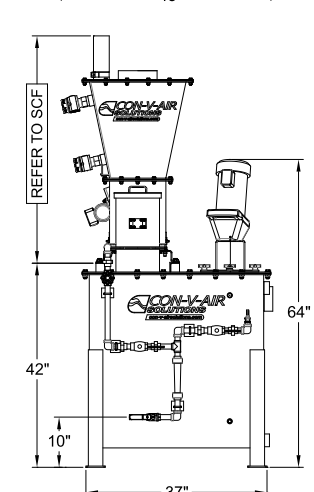
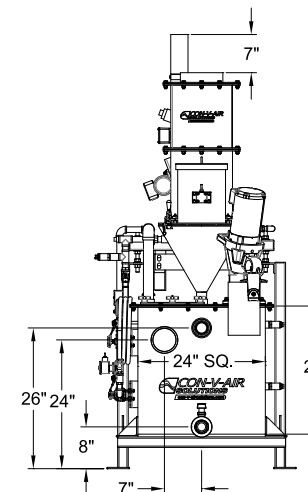
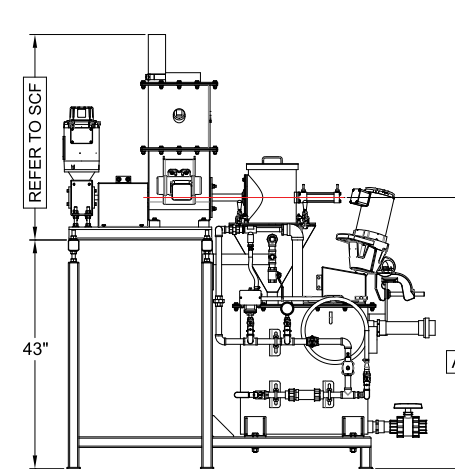
Typical Dry Chemical		
Dry Chemical	Bulk Density	
	lbs/ft ³	kg/m ³
Activated Carbon	20	320
Soda Ash	55	880
Potassium Permanganate	95	1520
Hydrated Lime	25	400
Magnesium Oxide	65	1041



MODEL # IIS-200W



MODEL # IIS-600



* : Excludes Screw Feeder

MODEL #	ADDITIONAL OPTIONS	CONFIGURATION #	DIMENSIONS *		WEIGHT *
			in.	mm	lbs
IIS-200	- VOLUMETRIC SYSTEM	# IIS-100BY-400K	59	1499	365
	- GRAVIMETRIC SYSTEM	# IIS-(SCF-500AF)-100BY-400K	61.5	1562	365
IIS-200W	- VOLUMETRIC SYSTEM - WETTING UNIT	# IIS-100BZ-400K	74	1880	430
	- GRAVIMETRIC SYSTEM - WETTING UNIT	# IIS-(SCF-500AF)-100BZ-400K	76.5	1943	430
IIS-600	- VOLUMETRIC SYSTEM	# IIS-100BY-400S	50	1270	495
	- GRAVIMETRIC SYSTEM	# IIS-(SCF-500AF)-100BY-400S	52.5	1334	495
IIS-600W	- VOLUMETRIC SYSTEM - WETTING UNIT	# IIS-100BZ-400S	62.25	1581	560
	- GRAVIMETRIC SYSTEM - WETTING UNIT	# IIS-(SCF-500AF)-100BZ-400S	64.75	1645	560