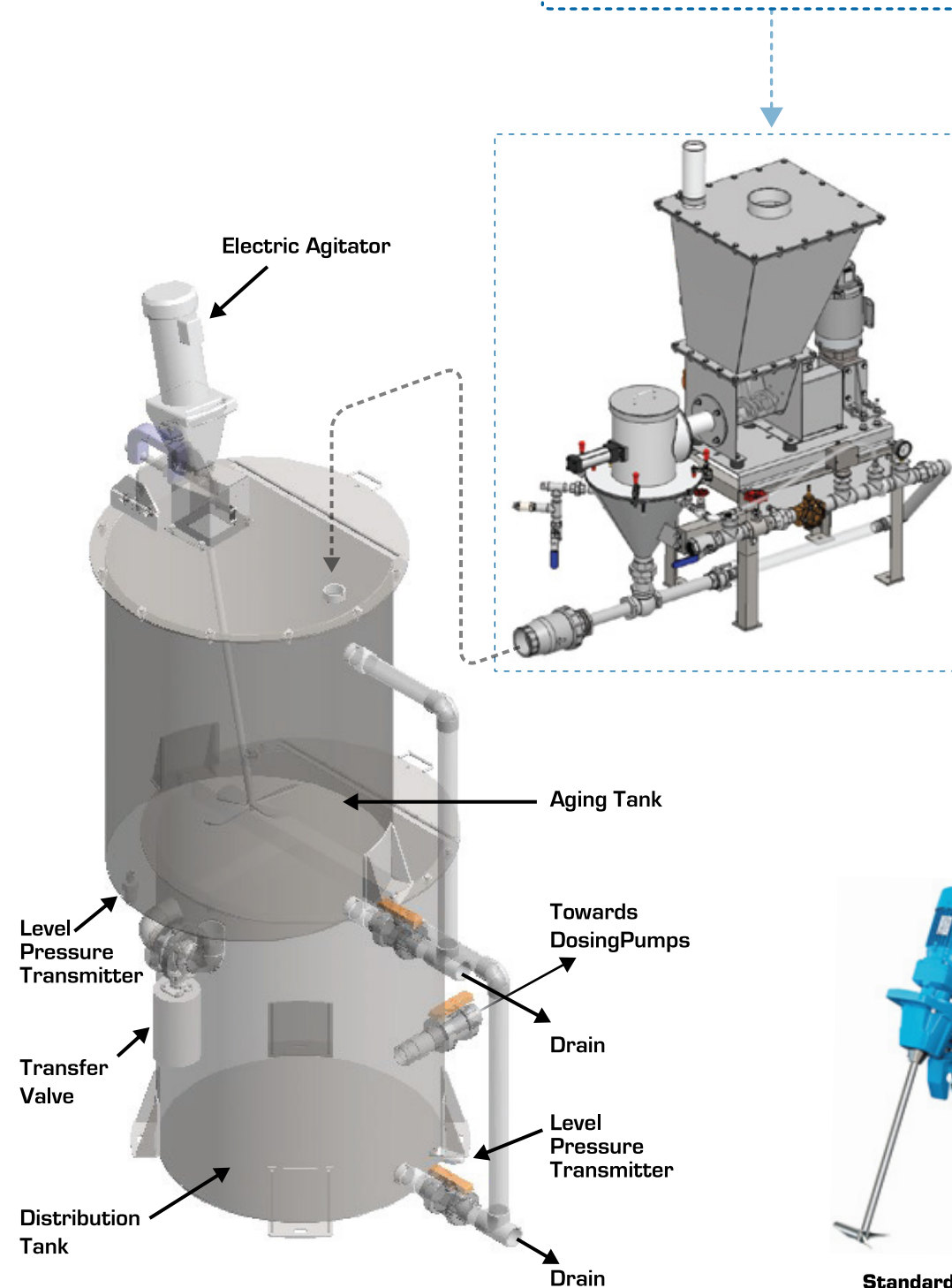


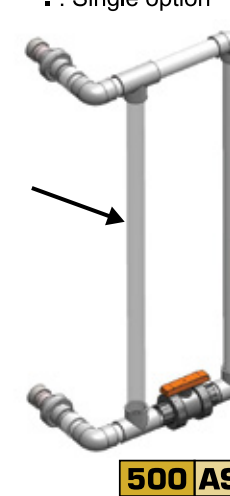
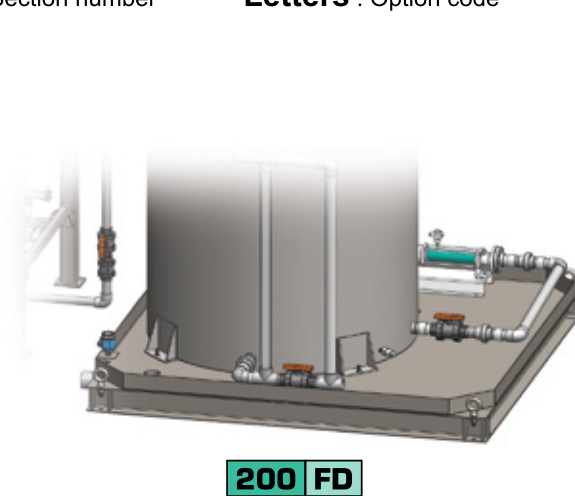
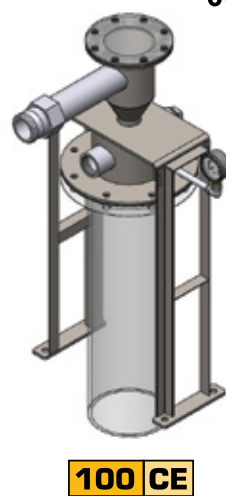
POLYBA - DRY POLYMER SYSTEM CONFIGURATOR

POLYBA - ((**SCF** - REFER TO EQUIPMENT #) + (**DIS** - REFER TO EQUIPMENT #)) - **100** . - **200** - **300** . - **400** - **500** + - **660** + + - **701** - **901** . - **902** - **903**



Section	Option	Description	Code
1	SCF	Screw feeder (Refer to equipment's #)	SCF
	DIS	Direct Injection System (Refer to equipment's #)	DIS
2	100	Aging tank only	CC
	200	Stacked maturation and distribution tank	CD
	300	Dry chemical product inlet including wetting head	CE
3	400	Liquide solution product inlet	CF
	500	Exclusive options	200
4	600	Containment area	FD
	700	Fast fill	FE
	800	Pump skid unit (see "SKD" product configuration)	FF
5	SIZES		300
	PRODUCT INLET		
	1 in.		E
	1-1/2 in.		F
	2 in.		G
	DISTRIBUTION DISCHARGE		
6	1 in.		E
	1-1/2 in.		F
	2 in.		G
7	HOPPERS / TANKS		400
	250 L		T
	500 L		U
	1,000 L		V
	1,500 L		L
2,000 L		M	
9	PROCESS ACCESSORIES		660
	M	Static mixer	660 M
	W	Electric actuated transfer valve	660 W
	X	Pneumatic actuated transfer valve	660 X
8	INSTRUMENTS		500
	AR	Pressure gauge level transmitter	500 AR
	AS	Clear level column	500 AS
10	ELECTRICAL POWER		701
	A	380V/3/50Hz	701 A
	B	460V/3/60Hz	701 B
	C	575V/3/60Hz	701 C
12	MATERIAL/FINISH/COATING		901
	DC	Glass bead finished (POLYBA)	901 DC
	DD	MI finish (POLYBA)	901 DD
	CZ	304L stainless steel construction (POLYBA)	901 CZ
11	DA	316 stainless steel construction (POLYBA)	901 DA
	DB	HDPE constructio (POLYBA)	901 DB
	CONTROL PANEL		902
13	H	Junction box	902 H
	I	Equipment and instruments prewired to the control panel provided by CON-V-AIR	902 I
	J	Control panel provided by others	902 J
14	CERTIFICATION/CLASSIFICATION		903
	B	Class 2, division 2	903 B
	C	Class 1, division 1	903 C
14	G	Class 2, division 1	903 G

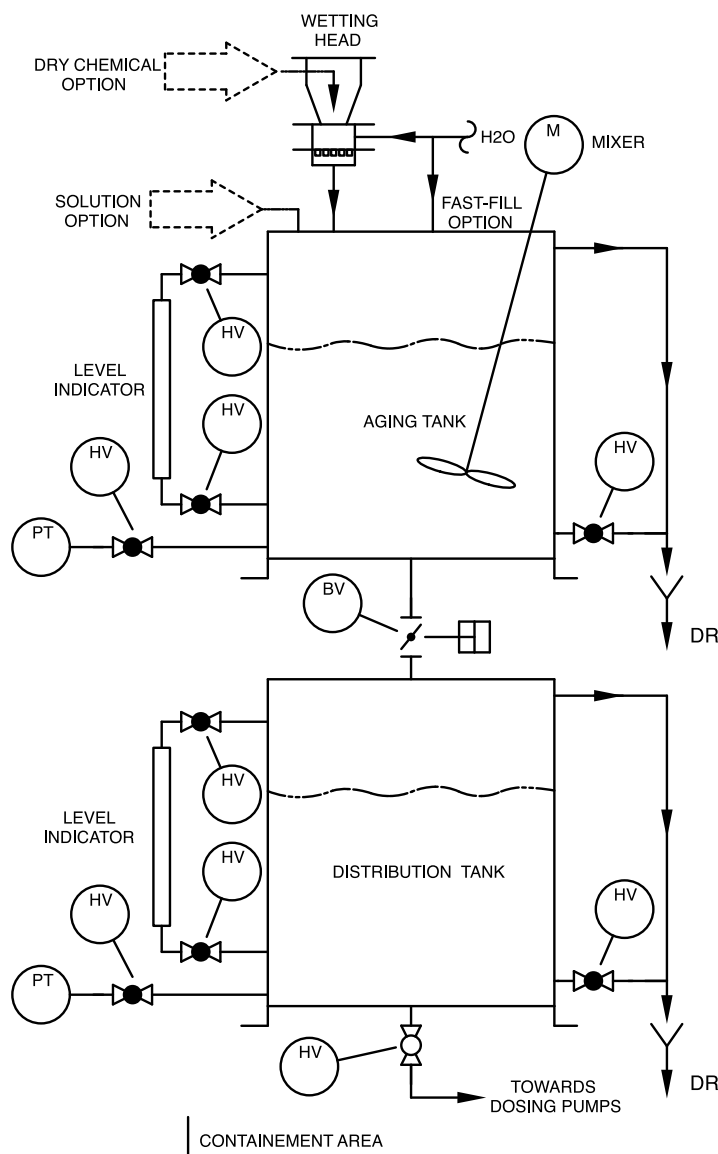
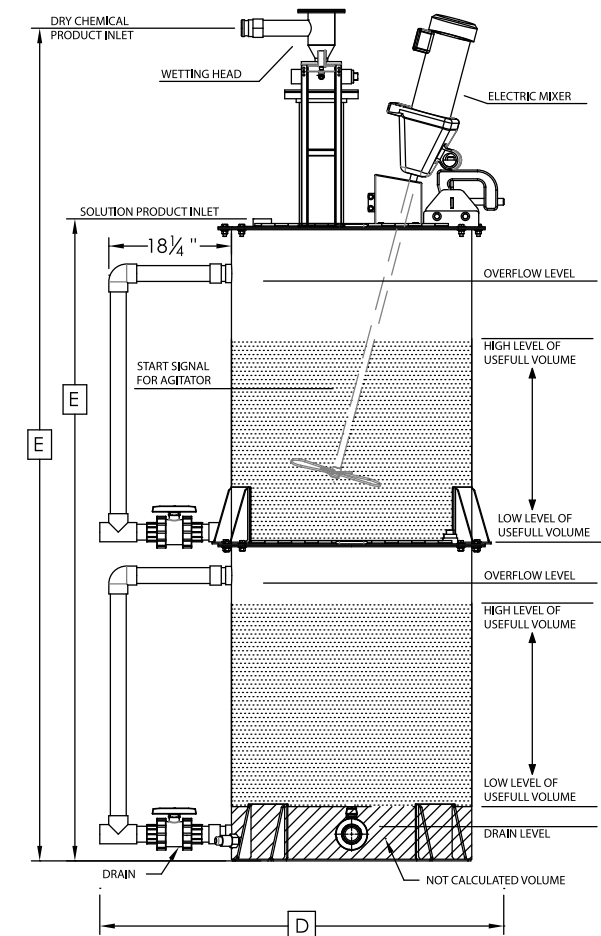
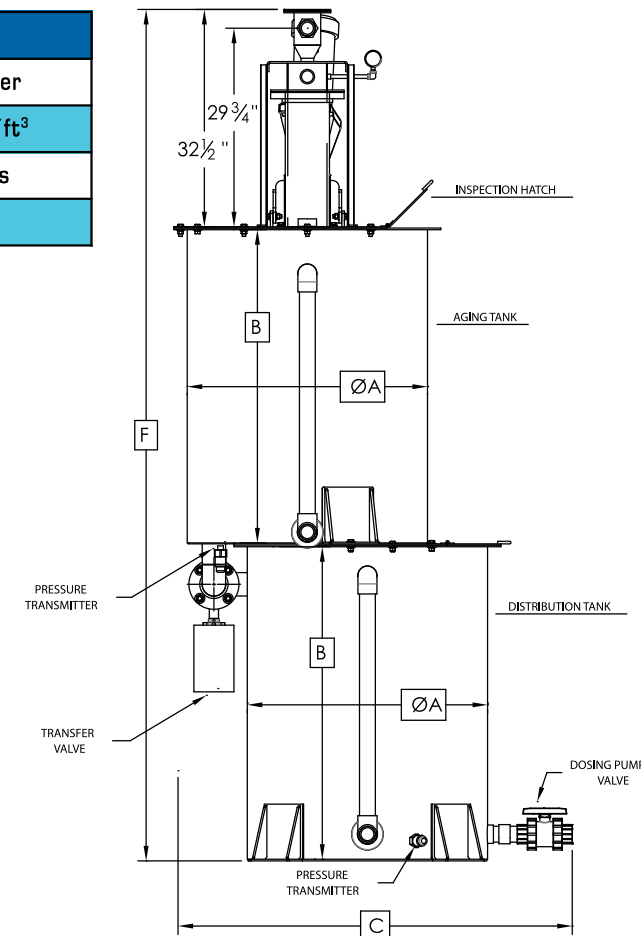
000 : Section number Letters : Option code + : Multiple options . : Single option Ø : Symbol to enter if no option selected



POLYBA - DRY POLYMER SYSTEM CONFIGURATOR

Useful Capacity [GPM]	Useful Capacity [L]	Maturation [min.]	Dry Chemical Feed Rate [kg/h]		Nb. Batch Batch/day	Distribution Feed Rate [L/hr]
			0.2 %	0.5 %		
65	250	45	0,7	1,7	32	333
		60	0,5	1,3	24	250
130	500	45	1,3	3,3	32	667
		60	1,0	2,5	24	500
260	1000	45	2,7	6,7	32	1333
		60	2,0	5,0	24	1000
400	1500	45	4,0	10,0	32	2000
		60	3,0	7,5	24	1500
530	2000	45	5,3	13,3	32	2667
		60	4,0	10,0	24	2000

Chemical Properties	
Dry Chemical	Dry Polymer
Density	40-45 lbs/ft ³
Viscosity	2000 cPs
Specific Gravity	1



	Aging Tank Usefull Volume	Distribution Tank Usefull Volume	Total Consumption				
			Elect.	Water		Air (Transfer Valve)	
				HP	GPM	L/min.	CFM
Stacked Tanks	1 x 250 L	1 x 350 L	0,5	6,5	25	<1	40
	1 x 500 L	1 x 635 L	0,5	13,5	50		
	1 x 1000 L	1 x 1250 L	1	26,5	100		
	1 x 1500 L	1 x 1800 L	1	40	150		
Single Batch	1 x 250 L	n/a	0,5	6,5	25		
	1 x 500 L	n/a	0,5	13,5	50		
	1 x 1000 L	n/a	1	26,5	100		
	1 x 1500 L	n/a	1	40	150		
3-Way	2 x 250 L	n/a	1	6,5	25		
	2 x 500 L	n/a	1	13,5	50		
	2 x 1000 L	n/a	2	26,5	100		
	2 x 1500 L	n/a	2	40	150		
	2 x 2000 L	n/a	2	53	200		

This table is considering a double stacked tanks setup (Aging + Distribution).
For single tank setup, weight is approximately half of total weight.
For additional options, please contact you our sales department.

MODEL #	ADDITIONAL OPTIONS	CONFIGURATION #	DIMENSIONS										TOTAL WEIGHT			
			Ø OF TANKS "A"		HEIGHT OF TANKS "B"		WIDTH "C"		DEPTH "D"		PRODUCT INLET "E"		Overall Height "F"		Sainless Steel Tanks	HDPE Tanks
			in.	mm	in.	mm	in.	mm	in.	mm	in.	mm	in.	mm	lbs	lbs
POLYBA-250	- DRY CHEMICAL PRODUCT INLET	# POLYBA-100CE-400T	30	762	42	1067	52.13	1324	54.5	1384	114.5	2908	117.25	2978	810	415
	- SOLUTION PRODUCT INLET	# POLYBA-100CF-400T	86	2184	88.75	2254	760	365								
POLYBA-500	- DRY CHEMICAL PRODUCT INLET	# POLYBA-100CE-400U	36	914	50	1270	59.13	1502	60.5	1537	130.5	3315	133.25	3385	1020	475
	- SOLUTION PRODUCT INLET	# POLYBA-100CF-400U	102	2591	104.75	2661	970	425								
POLYBA-1000	- DRY CHEMICAL PRODUCT INLET	# POLYBA-100CE-400V	48	1219	56	1422	73.13	1857	72.5	1842	142.5	3620	145.25	3689	1760	700
	- SOLUTION PRODUCT INLET	# POLYBA-100CF-400V	114	2896	116.75	2965	1710	650								
POLYBA-1500	- DRY CHEMICAL PRODUCT INLET	# POLYBA-100CE-400L	54	1372	60	1524	80.13	2035	78.5	1994	150.5	3823	153.25	3893	2060	785
	- SOLUTION PRODUCT INLET	# POLYBA-100CF-400L	122	3099	124.75	3169	2010	735								
POLYBA-2000	- DRY CHEMICAL PRODUCT INLET	# POLYBA-100CE-400M	60	1524	62	1575	87.13	2213	84.5	2146	154.5	3924	157.25	3994	2560	935
	- SOLUTION PRODUCT INLET	# POLYBA-100CF-400M	126	3200	128.75	3270	2510	885								