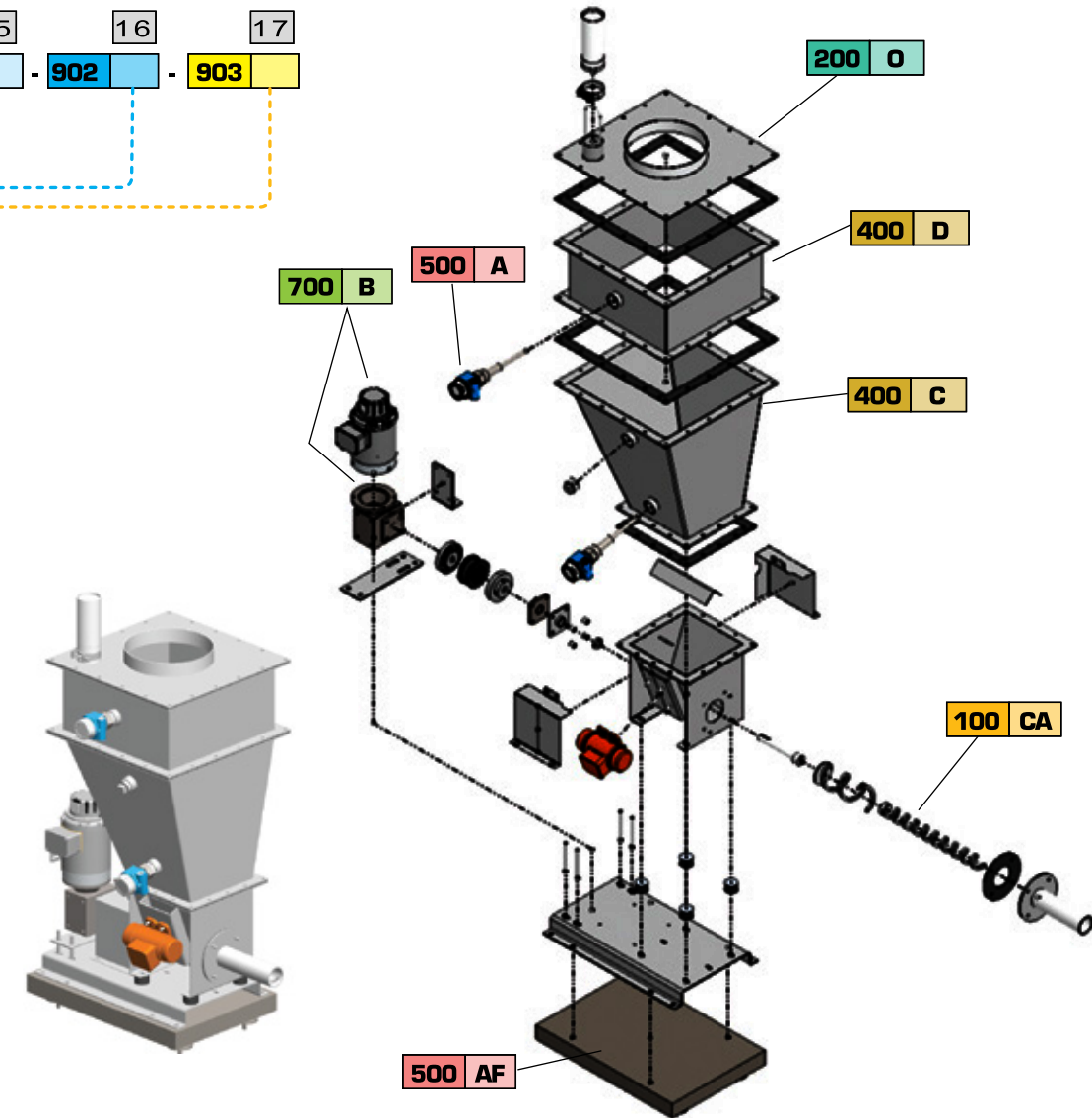
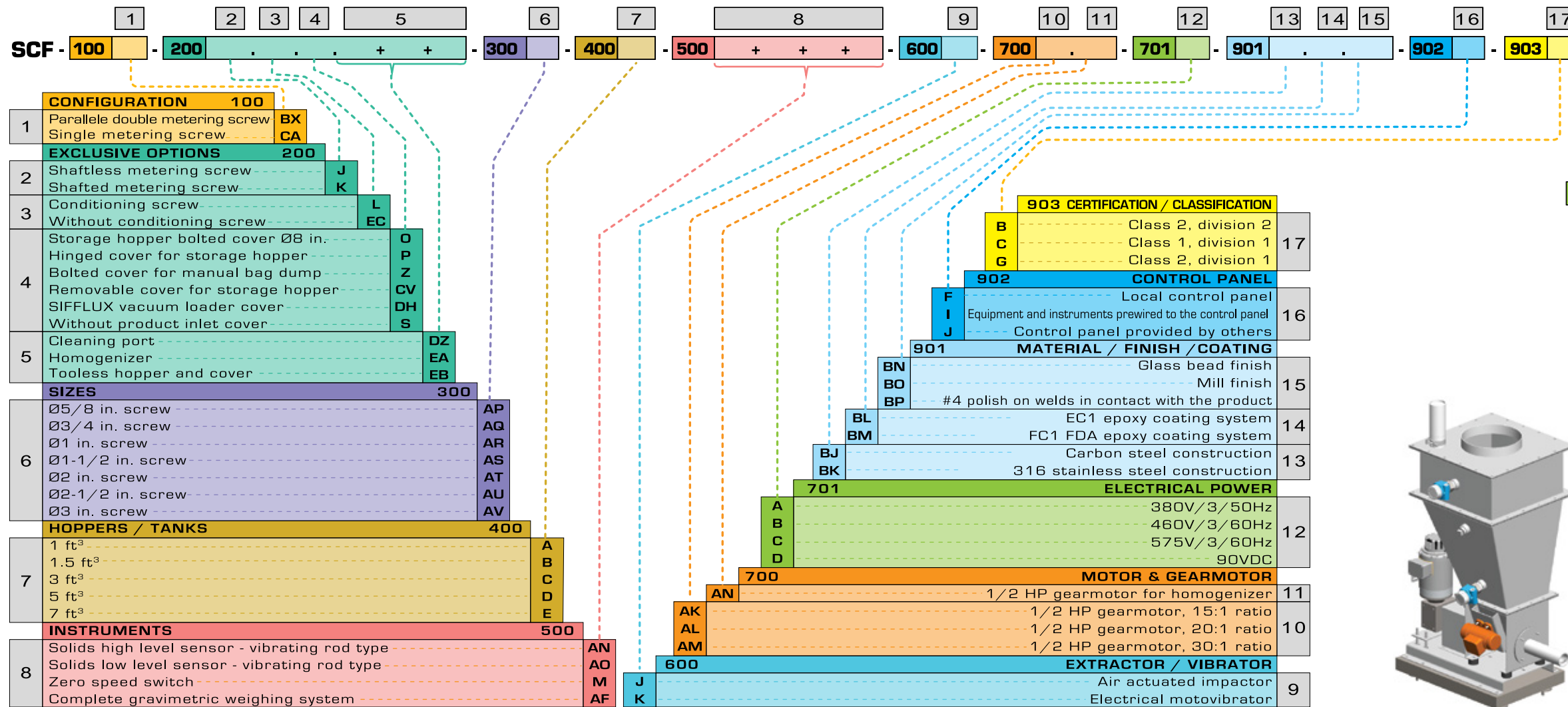
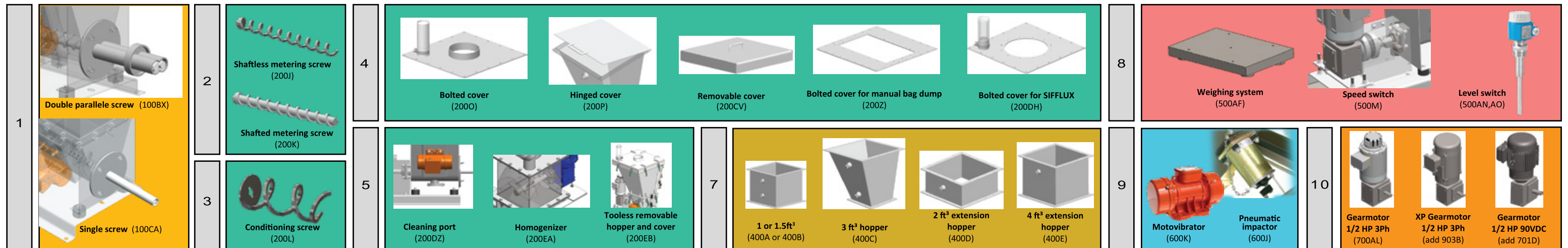


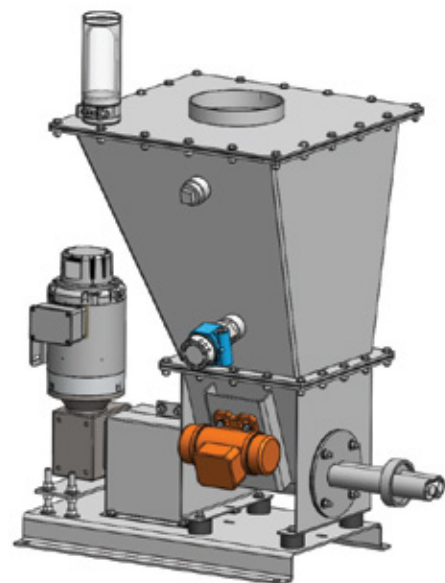
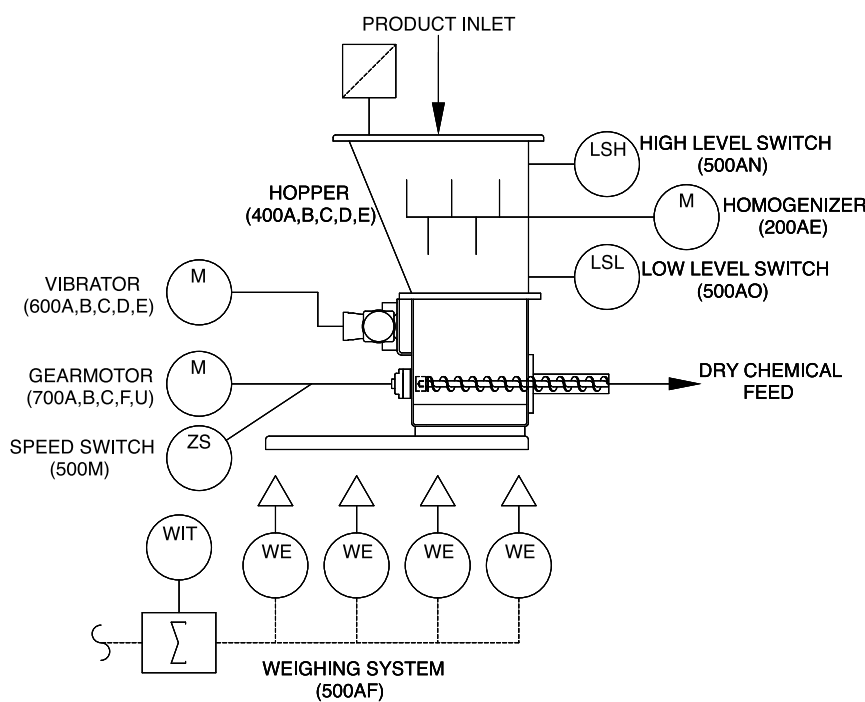
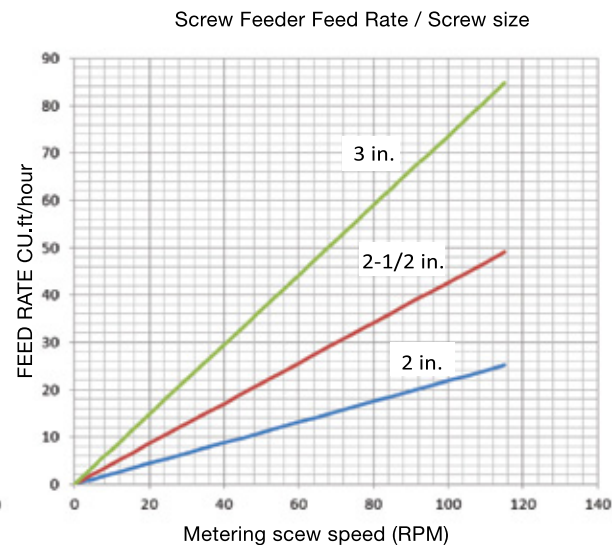
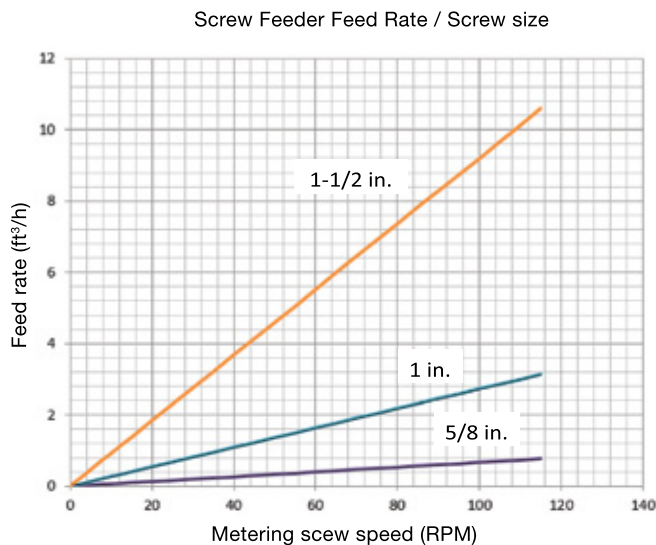
SCF - SCREW FEEDER CONFIGURATOR



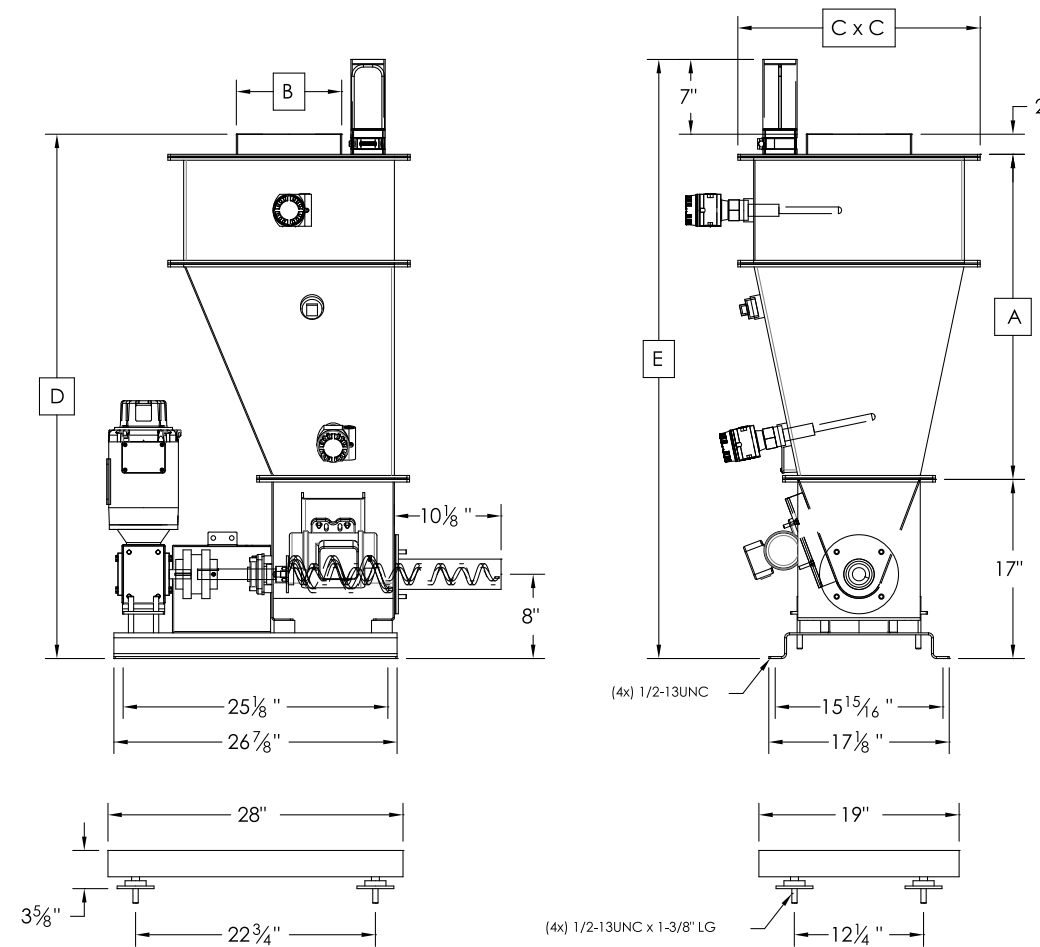
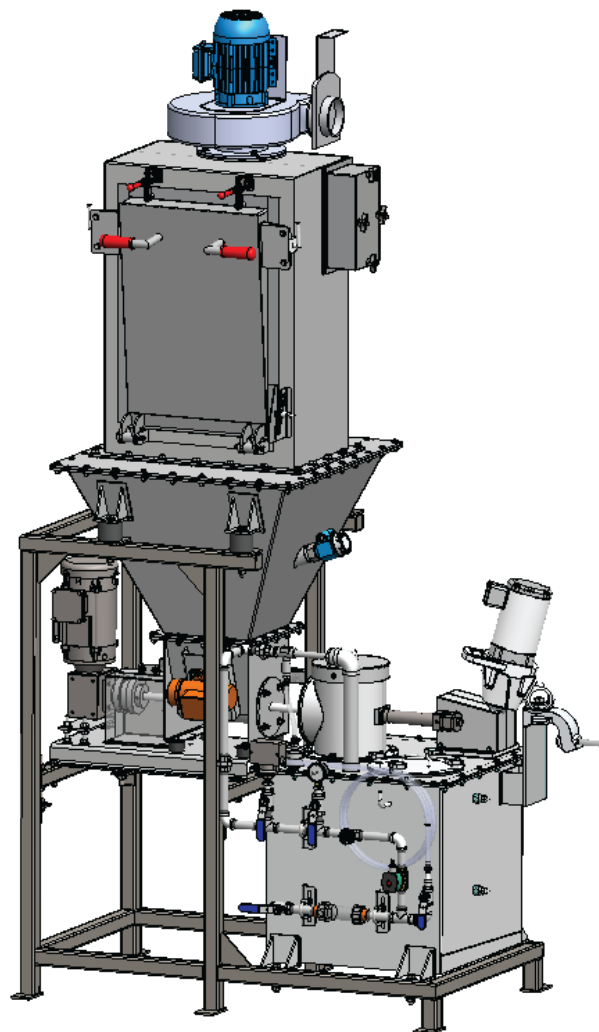
000 : Section number Letters : Option code + : Multiple options . : Single option Ø : Symbol to enter if no option selected



SCF - SCREW FEEDER CONFIGURATOR



Double parallel screw



	SCREW FEEDER DIMENSIONS										TOTAL CONSUMPTION		WEIGHT	
	STORAGE HOPPER HEIGHT "A"	PRODUCT INLET "B"	COVER DIMENSION "C"		PLATFORM vs PRODUCT INLET HEIGHT "D"		OVERALL HEIGHT "E"		AIR	ELECT.	TOTAL			
	in.	mm	in.	mm	in.	mm	in.	mm	CFM	PSI	HP	lbs		
W/O HOPPER	-	Ø8	Ø203	14.625	371	19.50	495	19.50	495	-	-	0.63	203	
W/ INTERMEDIATE HOPPER	12.50	318	Ø8	Ø203	14.63	371	31.50	800	36.50	927	-	-	0.63	246
W/ INTERMEDIATE HOPPER	12.50	318	Ø8	Ø203	14.63	371	31.50	800	36.50	927	-	-	1.13	294.5
W/ INTERMEDIATE HOPPER	16.50	419	Ø8	Ø203	14.63	371	35.50	902	40.50	1029	6	60	0.50	294.5
W/ INTERMEDIATE HOPPER	20.81	529	Ø8	Ø203	23.00	584	39.81	1011	44.81	1138	-	-	0.63	247
W/ EXTENSION HOPPER	30.88	784	Ø8	Ø203	23.00	584	49.88	1267	54.88	1394	6	60	0.50	281
W/ EXTENSION HOPPER	40.88	1038	Ø8	Ø203	23.00	584	59.88	1521	64.88	1648	-	-	0.63	384

Dry Chemical	Density (lbs/ft³)	Maximum dosage feed rate (kg/min.)					
		Screw Sizes (Gearmotor ratio 20:1 @ 60Hz 3 phase)					
		Ø5/8"	Ø1"	Ø1-1/2"	Ø2"	Ø2-1/2"	Ø3"
Hydrated Lime	25	0,145	0,594	2,005	4,752	9,281	16,037
Potassium Permanganate	95	0,551	2,257	7,619	18,058	35,268	60,941
Power Activated Carbon	20	0,116	0,475	1,604	3,802	7,425	12,830
Soda Ash	55	0,319	1,307	4,411	10,454	20,418	35,281
Dry Polymer	60	0,348	1,426	4,812	1,405	22,274	38,489

ADDITIONAL OPTIONS	CONFIGURATION #
- ELECTRIC MOTOVIBRATOR - 1/2 HP GEARMOTOR, 3 PHASES - REMOVABLE COVER	#SCF-100A-200J.L.CV-300AS-600A-700B
- ELECTRIC MOTOVIBRATOR - 1/2 HP GEARMOTOR, 3 PHASES - REMOVABLE COVER	#SCF-100A-200J.L.O-300AS-400A-500A-600A-700B.V
- 1.5 ft3 HOPPER - ELECTRIC MOTOVIBRATOR - 1/2 HP GEARMOTOR, 3 PHASES - HOMOGENIZER	#SCF-100A-200J.L.O.EA-300AS-400A-500A-600A-700B.V
- 1.5 ft3 HOPPER - ELECTRIC MOTOVIBRATOR - 1/2 HP GEARMOTOR, 90VDC	#SCF-100A-200J.L.O-300AS-400B-500A-600D-700B
- 3 ft3 HOPPER - ELECTRIC MOTOVIBRATOR - 1/2 HP GEARMOTOR, 3 PHASES	#SCF-100A-200J.L.O-300AS-400C-500A-600A-700B
- 5 ft3 HOPPER - ELECTRIC MOTOVIBRATOR - 1/2 HP GEARMOTOR, 90VDC	#SCF-100A-200J.L.O-300AS-400D-500A-600D-700U
- 7 ft3 HOPPER - ELECTRIC MOTOVIBRATOR - 1/2 HP GEARMOTOR, 3 PHASES	#SCF-100A-200J.L.O-300AS-400E-500A-600A-700B

GRAVIMETRIC #SCF-100B : REPLACE #SCF-100A BY #SCF-100B AND ADD 3-5/8" [92mm] TO HEIGHTS "A", "D" AND "E"