

SFX - SIFFLUX VACUUM LOADER CONFIGURATOR

SFX - 200 . - 300 - 450 - 570 - 660 - 901 . - 902 - 903

Section	Options	Description
EXCLUSIVE OPTIONS 200		
1	DM	Air pulsation cartridge cleaning
2	EY	Standard suction wand
	EZ	Deluxe suction wand
SIZES 300		
3	CL	Ø1-1/2 in. product inlet
	CM	Ø2 in. product inlet
FILTER 450		
4	B	Pleated cartridge filter element (9.15 ft ² filtering area / each)
FANS 570		
5	B	120V/1/50-60Hz, Centrifugal fan (max. 2.5 HP)
PROCESS ACCESSORIES 660		
6	D	Pneumatic pinch valve
901 MATERIAL / FINISH / COATING		
7	CM	Glass bead finish
	CN	Mill finish
	CO	#4 polish on welds in contact with the product
8	CP	304L stainless steel construction
	CQ	316 stainless steel construction
902 CONTROL PANEL		
9	F	Local control panel
	I	Equipment and instruments prewired to the control panel provided by CON-V-AIR
	J	Control panel provided by others
903 CERTIFICATION / CLASSIFICATION		
10	B	Class 2, division 2
	C	Class 1, division 1
	G	Class 2, division 1

000 : Section number Letters : Option code + : Multiple options . : Single option Ø : Symbol to enter if no option selected



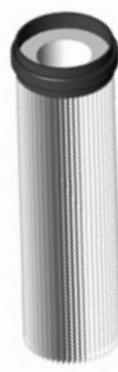
200 EY



200 EZ



660 D



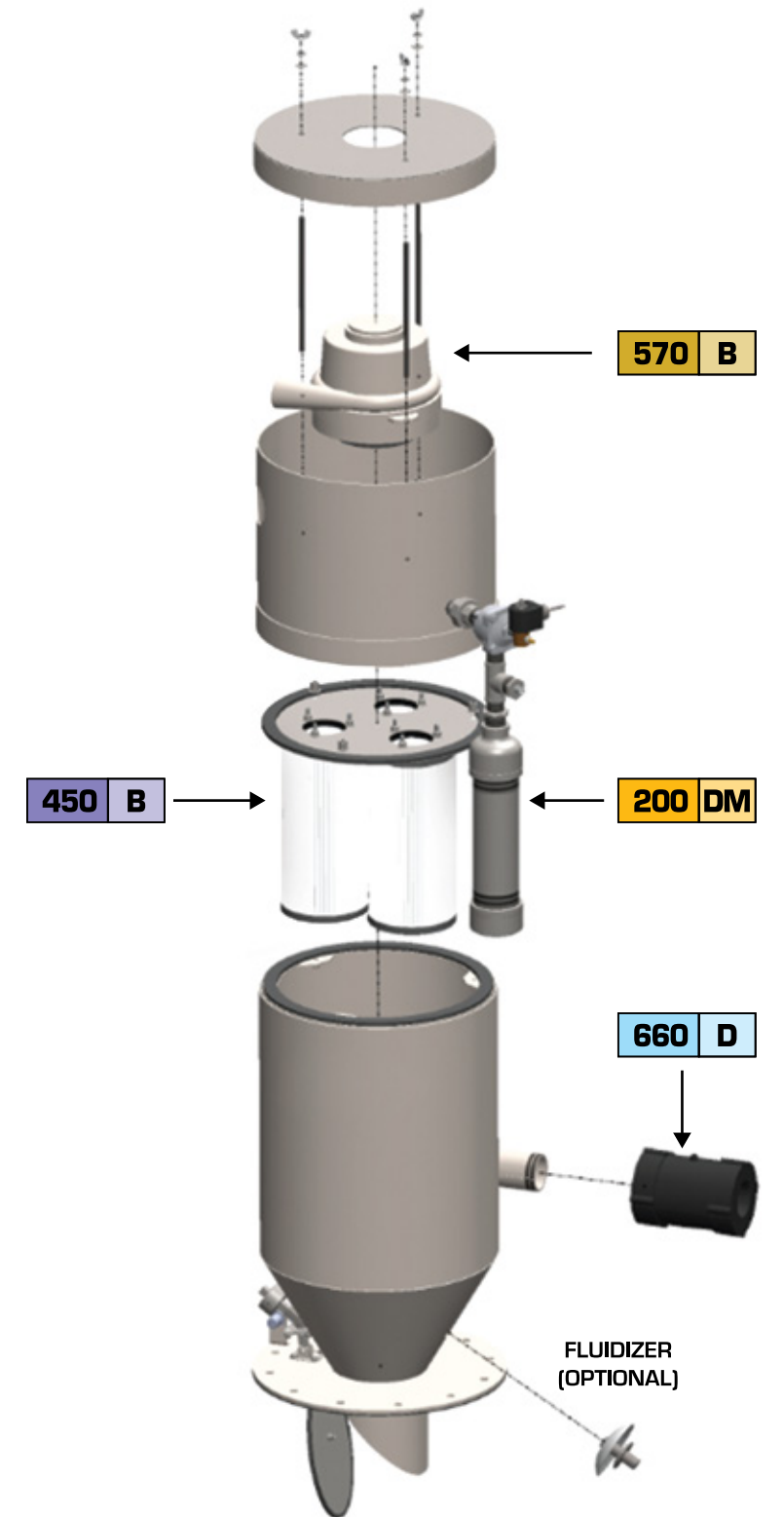
450 B



570 B

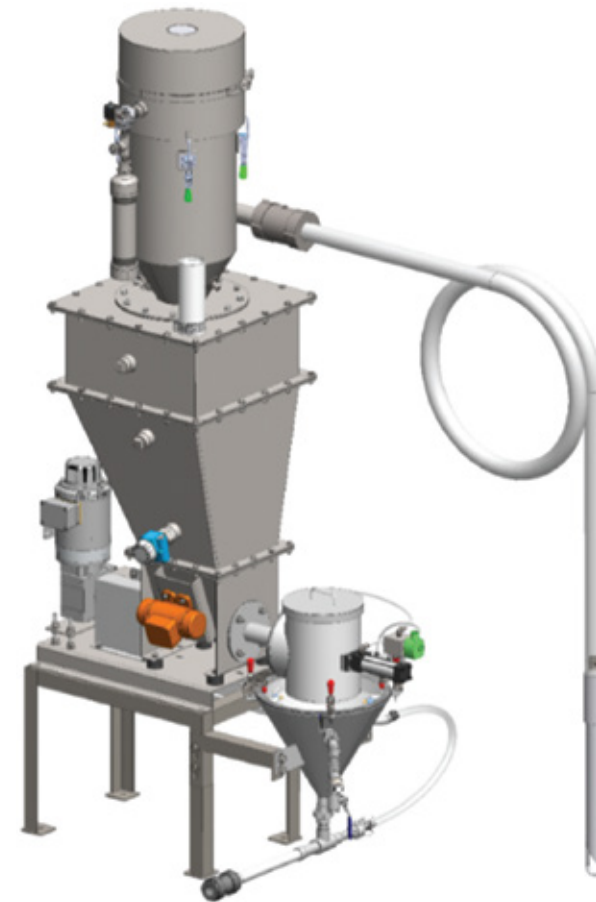
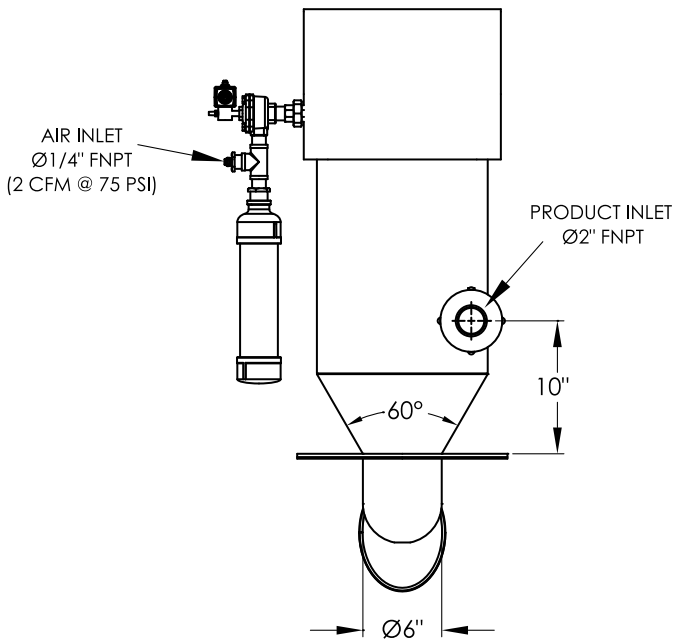
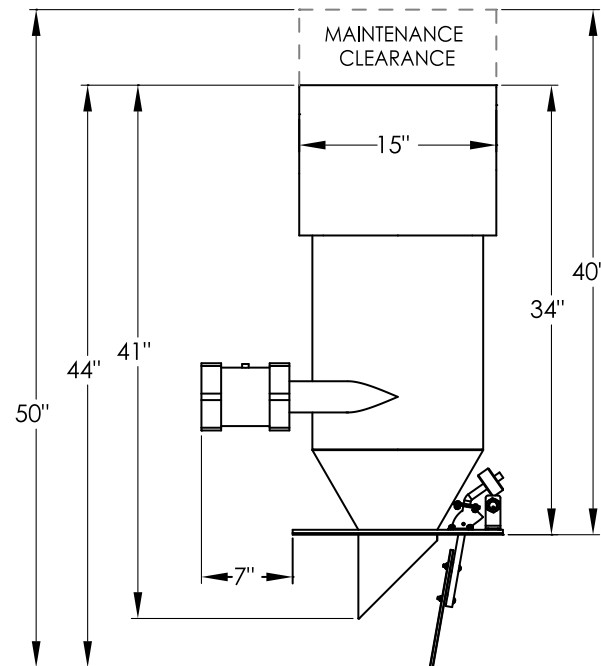
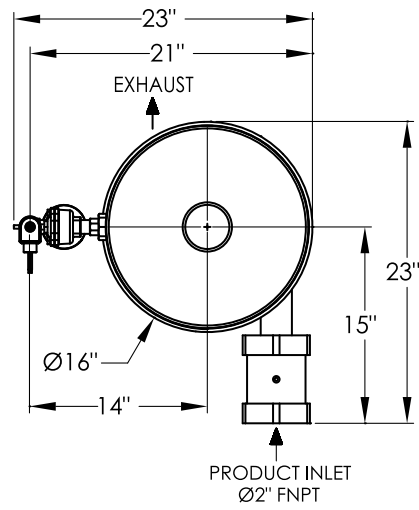
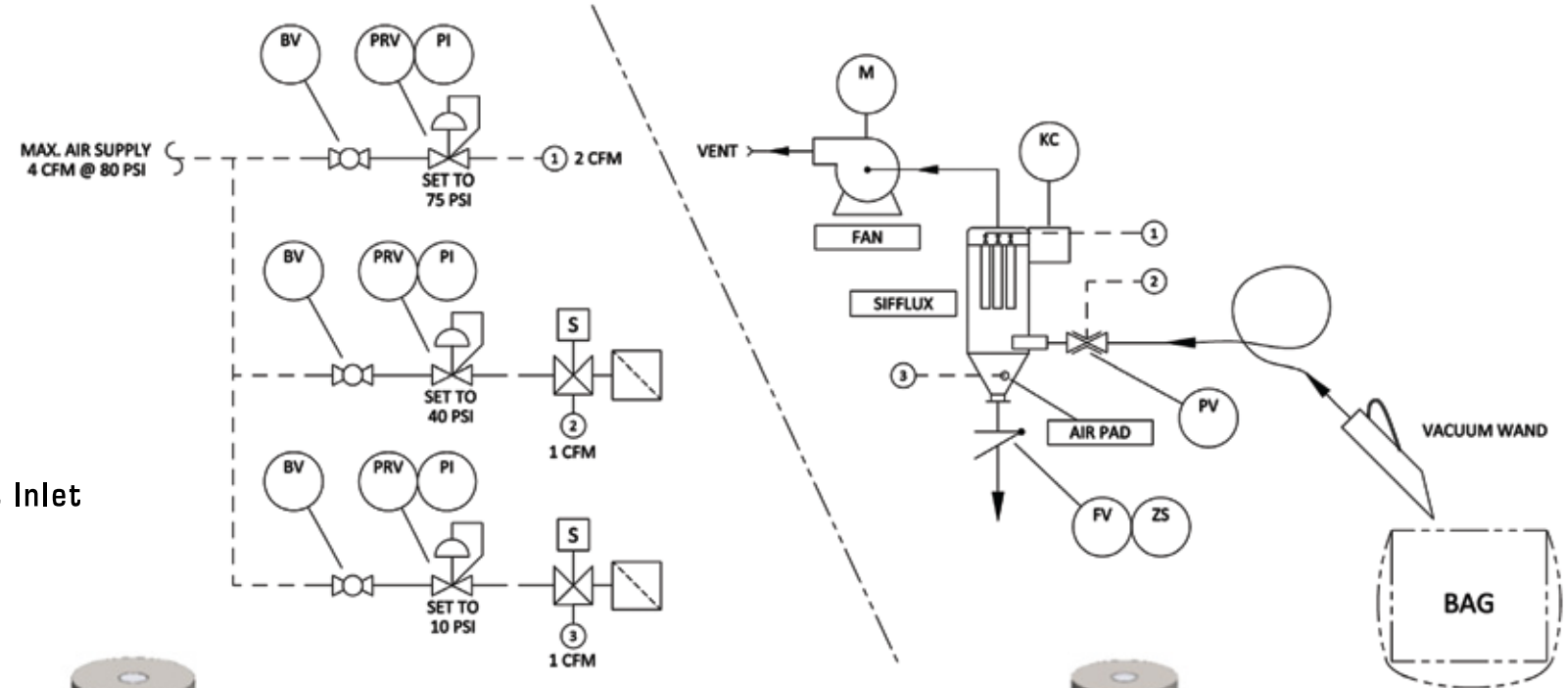
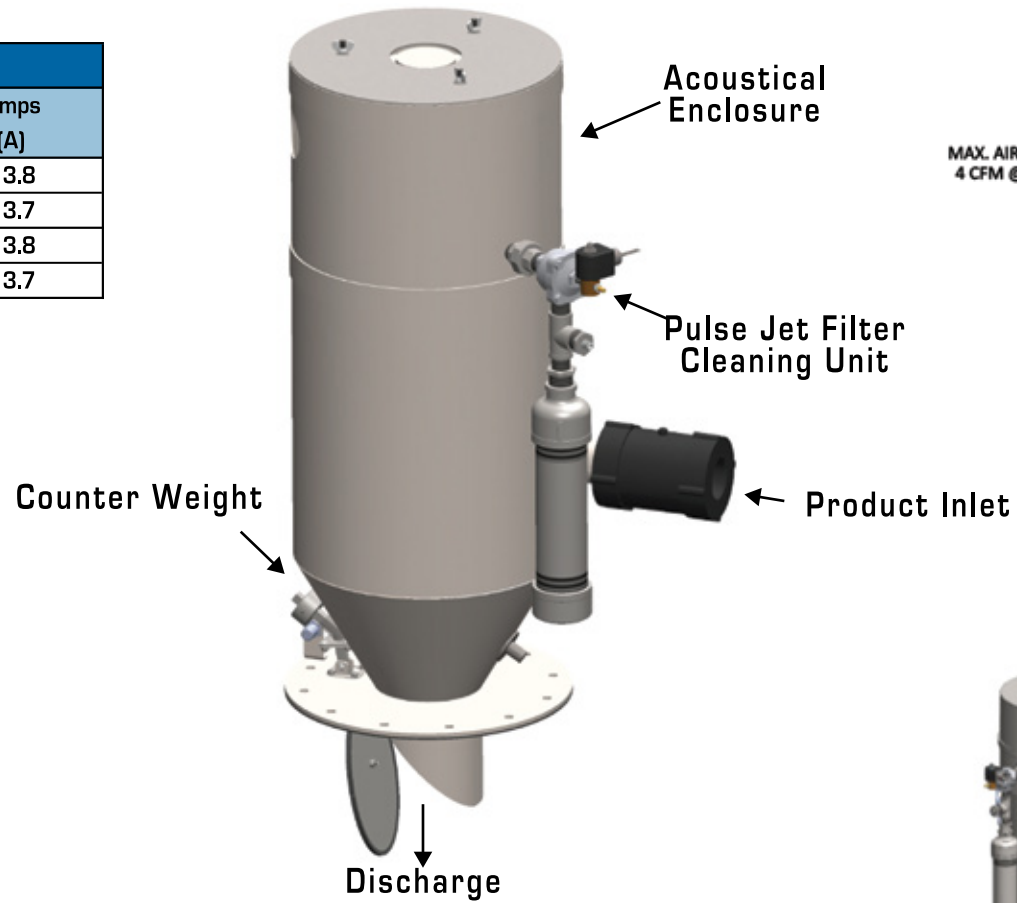


660 D

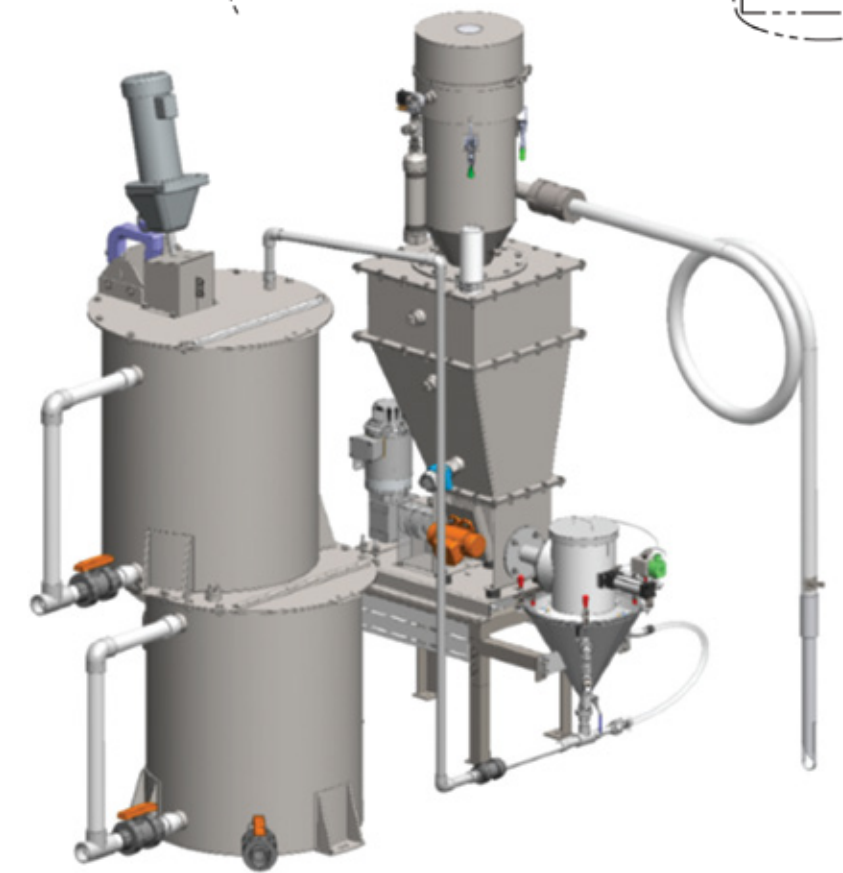


SFX - SIFFLUX VACUUM LOADER CONFIGURATOR

SFX - SIFFLUX Capacities			
Distance (ft.)	Size (in.) (in.)	Feed Rate (lbs/min.)	Amps (A)
15	1-1/2	10	13.8
	2	15	13.7
25	1-1/2	8	13.8
	2	12	13.7



Variable Concentration Direct Injection System



Polymer Make-Down System